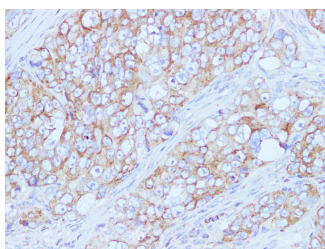


## CD59 Polyclonal Antibody

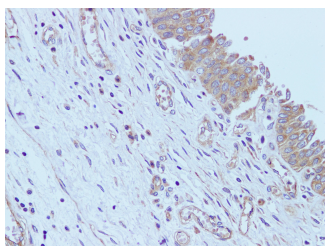
|                     |   |                   |        |
|---------------------|---|-------------------|--------|
| <b>Catalog No.</b>  | E-AB-40324                                  | <b>Reactivity</b> | H      |
| <b>Storage</b>      | Store at -20°C. Avoid freeze / thaw cycles. | <b>Host</b>       | Rabbit |
| <b>Applications</b> | IHC   | <b>Isotype</b>    | IgG    |

**Note:** Centrifuge before opening to ensure complete recovery of vial contents.

### Images



Immunohistochemistry of paraffin-embedded Human ovarian cancer using CD59 Polyclonal Antibody at dilution of 1:100



Immunohistochemistry of paraffin-embedded Human urinary bladder using CD59 Polyclonal Antibody at dilution of 1:100

### Immunogen Information

|                  |  |
|------------------|--|
| <b>Immunogen</b> | Recombinant Human CD59 glycoprotein protein                                |
| <b>Swissprot</b> | P13987   |
| <b>Synonyms</b>  | 16.3A5, 1F5, 1F5, EJ16, EJ30, EL32, FLJ38134, FLJ92039, G344, HRF 20, Ly 6 |

### Product Information

|                 |  |
|-----------------|--|
| <b>Buffer</b>   | PBS with 0.05% Proclin300 and 50% glycerol, pH7.4. |
| <b>Purify</b>   | Affinity purification                              |
| <b>Dilution</b> | IHC 1:100-1:200                                    |

### Background

This gene encodes a cell surface glycoprotein that regulates complement-mediated cell lysis, and it is involved in lymphocyte signal transduction. This protein is a potent inhibitor of the complement membrane attack complex, whereby it binds complement C8 and/or C9 during the assembly of this complex, thereby inhibiting the incorporation of multiple copies of C9 into the complex, which is necessary for osmolytic pore formation. This protein also plays a role in signal transduction pathways in the activation of T cells. Mutations in this gene cause CD59 deficiency, a disease resulting in hemolytic anemia and thrombosis, and which causes cerebral infarction.

#### For Research Use Only

Thank you for your recent purchase.  
 If you would like to learn more about antibodies, please visit [www.elabscience.com](http://www.elabscience.com).

**Focus on your research  
 Service for life science**

Applications:WB-Western Blot IHC-Immunohistochemistry IF-Immunofluorescence IP-Immunoprecipitation FC-Flow cytometry ChIP-Chromatin Immunoprecipitation Reactivity: H-Human R-Rat M-Mouse Mk-Monkey Dg-Dog Ch-Chicken Hm-Hamster Rb-Rabbit Sh-Sheep Pg-Pig Z-Zebrafish X-Xenopus C-Cow.