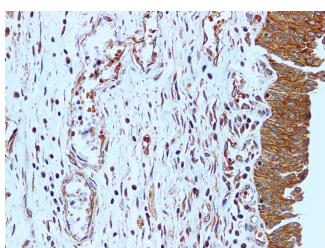


## AKT1 Polyclonal Antibody

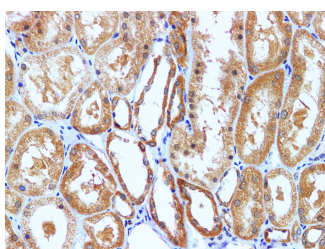
<b>Catalog No.</b>	E-AB-40329	<b>Reactivity</b>	H
<b>Storage</b>	Store at -20°C. Avoid freeze / thaw cycles.	<b>Host</b>	Rabbit
<b>Applications</b>	IHC	<b>Isotype</b>	IgG

**Note:** Centrifuge before opening to ensure complete recovery of vial contents.

### Images



Immunohistochemistry of paraffin-embedded Human urinary bladder using AKT1 Polyclonal Antibody at dilution of 1:100



Immunohistochemistry of paraffin-embedded Human kidney using AKT1 Polyclonal Antibody at dilution of 1:100

### Immunogen Information

<b>Immunogen</b>	Recombinant Human RAC-alpha serine/threonine-protein kinase protein
<b>Swissprot</b>	P31749
<b>Synonyms</b>	AKT 1, AKT, AKT1, AKT1_HUMAN, MGC99656, PKB, PKB-ALPHA, PRKBA, Protein kinase B, Proto-oncogene c-Akt, RAC Alpha, RAC, RAC-PK-alpha

### Product Information

<b>Buffer</b>	PBS with 0.05% Proclin300 and 50% glycerol, pH7.4.
<b>Purify</b>	Affinity purification
<b>Dilution</b>	IHC 1:100-1:200

### Background

The serine-threonine protein kinase AKT1 is catalytically inactive in serum-starved primary and immortalized fibroblasts. Survival factors can suppress apoptosis in a transcription-independent manner by activating the serine/threonine kinase AKT1, which then phosphorylates and inactivates components of the apoptotic machinery. This antibody detects all the members of AKT with/without phospho- modification.

#### For Research Use Only

Thank you for your recent purchase.  
 If you would like to learn more about antibodies, please visit [www.elabscience.com](http://www.elabscience.com).

**Focus on your research  
 Service for life science**

Applications: WB-Western Blot IHC-Immunohistochemistry IF-Immunofluorescence IP-Immunoprecipitation FC-Flow cytometry ChIP-Chromatin Immunoprecipitation Reactivity: H-Human R-Rat M-Mouse Mk-Monkey Dg-Dog Ch-Chicken Hm-Hamster Rb-Rabbit Sh-Sheep Pg-Pig Z-Zebrafish X-Xenopus C-Cow.