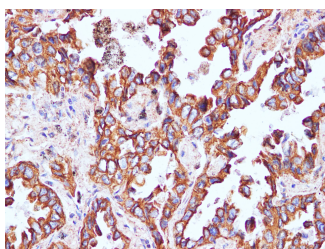


CK-8 Polyclonal Antibody

Catalog No.	E-AB-40330	Reactivity	H
Storage	Store at -20°C. Avoid freeze / thaw cycles.	Host	Rabbit
Applications	IHC	Isotype	IgG

Note: Centrifuge before opening to ensure complete recovery of vial contents.

Images



Immunohistochemistry of paraffin-embedded Human lung cancer using CK-8 Polyclonal Antibody at dilution of 1:100

Immunogen Information

Immunogen	Recombinant Human type II cytoskeletal 8 protein
Swissprot	P05787
Synonyms	CARD2, Cell proliferation inducing protein 46, CK 8, CK-8, CK18, CK8, CYK18, CYK8, K18, K2C8, K2C8_HUMAN, K8, Keratin 8, KO, KRT18

Product Information

Buffer	PBS with 0.05% Proclin300 and 50% glycerol, pH7.4.
Purify	Affinity purification
Dilution	IHC 1:100-1:200

Background

Cytokeratin 8 (CK8) has a molecular weight of 52.5 KDa, which belongs to the HMW (high molecular weight) B-type Cytokeratin. CK8 is mainly marked on non-squamous epithelium, thus can be used for the diagnosis of adenocarcinoma and ductal carcinoma. Generally, CK8 is not expressed in squamous cell carcinoma. It is reported that hepatocellular carcinoma mainly express CK8 and CK18.

For Research Use Only

Thank you for your recent purchase.
 If you would like to learn more about antibodies, please visit www.elabscience.com.

**Focus on your research
 Service for life science**

Applications: WB-Western Blot IHC-Immunohistochemistry IF-Immunofluorescence IP-Immunoprecipitation FC-Flow cytometry ChIP-Chromatin Immunoprecipitation Reactivity: H-Human R-Rat M-Mouse Mk-Monkey Dg-Dog Ch-Chicken Hm-Hamster Rb-Rabbit Sh-Sheep Pg-Pig Z-Zebrafish X-Xenopus C-Cow.