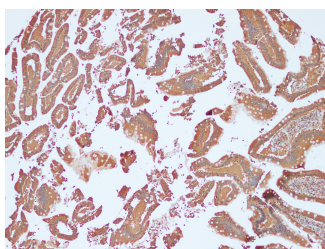


NRAS Polyclonal Antibody

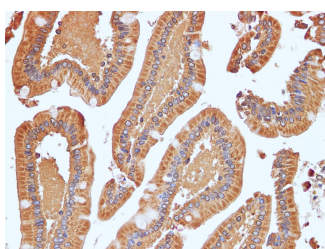
Catalog No.	E-AB-40331	Reactivity	H
Storage	Store at -20°C. Avoid freeze / thaw cycles.	Host	Rabbit
Applications	IHC	Isotype	IgG

Note: Centrifuge before opening to ensure complete recovery of vial contents.

Images



Immunohistochemistry of paraffin-embedded Human duodenum using NRAS Polyclonal Antibody at dilution of 1:100(100×)



Immunohistochemistry of paraffin-embedded Human duodenum using NRAS Polyclonal Antibody at dilution of 1:100(400×)

Immunogen Information

Immunogen	Recombinant Human GTPase NRas protein
Swissprot	P01111
Synonyms	c-H-ras, GTPase Kras, GTPase Nras, H-Ras-1, Ha-Ras, HRAS1, K-Ras 2, Ki-Ras, KRAS, KRAS2, NRAS, p21ras, RASK2, Transforming protein N-Ras

Product Information

Buffer	PBS with 0.05% Proclin300 and 50% glycerol, pH7.4.
Purify	Affinity purification
Dilution	IHC 1:100-1:400

Background

This is an N-ras oncogene encoding a membrane protein that shuttles between the Golgi apparatus and the plasma membrane. This shuttling is regulated through palmitoylation and depalmitoylation by the ZDHHC9-GOLGA7 complex. The encoded protein, which has intrinsic GTPase activity, is activated by a guanine nucleotide-exchange factor and inactivated by a GTPase activating protein.

For Research Use Only

Thank you for your recent purchase.
 If you would like to learn more about antibodies, please visit www.elabscience.com.

**Focus on your research
 Service for life science**

Applications:WB-Western Blot IHC-Immunohistochemistry IF-Immunofluorescence IP-Immunoprecipitation FC-Flow cytometry ChIP-Chromatin Immunoprecipitation Reactivity: H-Human R-Rat M-Mouse Mk-Monkey Dg-Dog Ch-Chicken Hm-Hamster Rb-Rabbit Sh-Sheep Pg-Pig Z-Zebrafish X-Xenopus C-Cow.