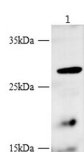


BBC3 Polyclonal Antibody

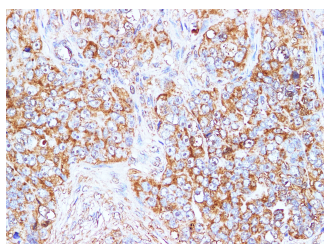
Catalog No.	E-AB-40332	Reactivity	H
Storage	Store at -20°C. Avoid freeze / thaw cycles.	Host	Rabbit
Applications	WB,IHC	Isotype	IgG

Note: Centrifuge before opening to ensure complete recovery of vial contents.

Images



Western blot with Flt3 Polyclonal antibody at dilution of 1:1000.lane 1:K562 whole cell lysate



Immunohistochemistry of paraffin-embedded Human ovarian cancer using BBC3 Polyclonal Antibody at dilution of 1:100

Immunogen Information

Immunogen	Recombinant Human Bcl-2-binding component 3 protein
Swissprot	Q9BXH1
Synonyms	BBC 3, Bbc3, BBC3_HUMAN, BCL 2 binding component 3, JFY 1, JFY-1, JFY1, p53 up-regulated modulator of apoptosis,PUMA alpha, PUMA/JFY1

Product Information

Calculated MW	21kDa
Observed MW	26kDa
Buffer	PBS with 0.05% Proclin300 and 50% glycerol, pH7.4.
Purify	Affinity purification
Dilution	WB:1:500-1000 IHC 1:100-1:200

Background

This gene encodes a member of the BCL-2 family of proteins. This family member belongs to the BH3-only pro-apoptotic subclass. The protein cooperates with direct activator proteins to induce mitochondrial outer membrane permeabilization and apoptosis. It can bind to anti-apoptotic Bcl-2 family members to induce mitochondrial dysfunction and caspase activation. Because of its pro-apoptotic role, this gene is a potential drug target for cancer therapy and for tissue injury. Alternative splicing results in multiple transcript variants.

For Research Use Only

Thank you for your recent purchase.
 If you would like to learn more about antibodies, please visit www.elabscience.com.

**Focus on your research
 Service for life science**

Applications:WB-Western Blot IHC-Immunohistochemistry IF-Immunofluorescence IP-Immunoprecipitation FC-Flow cytometry ChIP-Chromatin Immunoprecipitation Reactivity: H-Human R-Rat M-Mouse Mk-Monkey Dg-Dog Ch-Chicken Hm-Hamster Rb-Rabbit Sh-Sheep Pg-Pig Z-Zebrafish X-Xenopus C-Cow.