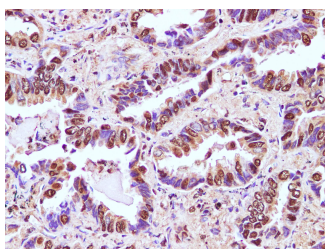


RBM3 Polyclonal Antibody

Catalog No.	E-AB-40323	Reactivity	H
Storage	Store at -20°C. Avoid freeze / thaw cycles.	Host	Rabbit
Applications	IHC	Isotype	IgG

Note: Centrifuge before opening to ensure complete recovery of vial contents.

Images



Immunohistochemistry of paraffin-embedded Human lung cancer using RBM3 Polyclonal Antibody at dilution of 1:100

Immunogen Information

Immunogen	Recombinant Human RNA-binding protein 3 protein
Swissprot	P98179
Synonyms	2600016C11Rik, IS1 RNPL, MGC105811

Product Information

Buffer	PBS with 0.05% Proclin300 and 50% glycerol, pH7.4.
Purify	Affinity purification
Dilution	IHC 1:100-1:400

Background

RBM3, also named as RNPL, is a cold-inducible mRNA binding protein that enhances global protein synthesis at both physiological and mild hypothermic temperatures. It reduces the relative abundance of microRNAs, when overexpressed. RBM3 enhances phosphorylation of translation initiation factors and active polysome formation. It is up-regulated in human tumors. RBM3 is a potential proto-oncogenic proteins upon overexpression.

For Research Use Only

Thank you for your recent purchase.
 If you would like to learn more about antibodies, please visit www.elabscience.com.

**Focus on your research
 Service for life science**

Applications:WB-Western Blot IHC-Immunohistochemistry IF-Immunofluorescence IP-Immunoprecipitation FC-Flow cytometry ChIP-Chromatin Immunoprecipitation Reactivity: H-Human R-Rat M-Mouse Mk-Monkey Dg-Dog Ch-Chicken Hm-Hamster Rb-Rabbit Sh-Sheep Pg-Pig Z-Zebrafish X-Xenopus C-Cow.