

## PerCP/Cyanine5.5 Anti-Rat CD45 Antibody[OX-1]

<b>Catalog No.</b>	E-AB-F1227UJ	<b>Reactivity</b>	Rat
<b>Storage</b>	Store at 2~8°C, Avoid freeze / thaw cycles	<b>Applications</b>	FCM

**Important Note:** Centrifuge before opening to ensure complete recovery of vial contents.

### Antigen Information

<b>Alternate Names</b>	Receptor-type tyrosine-protein phosphatase C,Leukocyte common antigen, LCA, T200, Ly-5,Ptprc
<b>Uniprot ID</b>	P04157
<b>Background</b>	CD45 is a 180-220 kD protein also known as leukocyte common antigen (LCA). It is a protein tyrosine phosphatase with multiple isoforms differing as a result of alternative splicing of the extracellular domain and glycosylation. CD45 is expressed on all hematopoietic cells except erythrocytes and platelets; isoform expression depends on cell type, activation state, and cell maturation. CD45 functions in signal transduction through T and B cell antigen receptors. CD45 has been shown to interact with various proteins including galectin-1, CD2, CD3, and CD4. The OX-1 antibody has been shown to partially inhibit NK cell-mediated lysis of syngeneic tumor cells in vitro.

### Product Details

<b>Form</b>	Liquid
<b>Concentration</b>	0.2 mg/mL
<b>Size</b>	25µg/100µg
<b>Clone No.</b>	OX-1
<b>Host</b>	Mouse
<b>Isotype</b>	Mouse IgG1, κ
<b>Reactivity</b>	Rat
<b>Application</b>	FCM
<b>Isotype Control</b>	<a href="#">PerCP/Cyanine5.5 Mouse IgG1, κ Isotype Control[MOPC-21] [Product E-AB-F09793J]</a>
<b>Storage Buffer</b>	Phosphate buffered solution, pH 7.2, containing 0.09% stabilizer and 1% protein protectant.
<b>Shipping</b>	Biological ice pack at 4 °C
<b>Stability &amp; Storage</b>	Keep as concentrated solution. Store at 2~8°C and protected from prolonged exposure to light.Do not freeze. This product is guaranteed up to one year from purchase.

#### For Research Use Only

Thank you for your recent purchase.  
 If you would like to learn more about antibodies, please visit [www.elabscience.com](http://www.elabscience.com).

**Focus on your research  
 Service for life science**

Applications:Activ- Activation; Block- Blocking; Separation- Cell Separation ; Cell Sep-Neg- Cell Separation by Negative Selection; FA- Functional Assay; Neut- Neutralization; Stim- Stimulation; FCM- Flow Cytometry; ICFM: Intracellular Staining for Flow Cytometry; WB- Western Blotting; IHC- Immunohistochemistry; IF- Immunofluorescence; IP- Immunoprecipitation

## Fluorophore

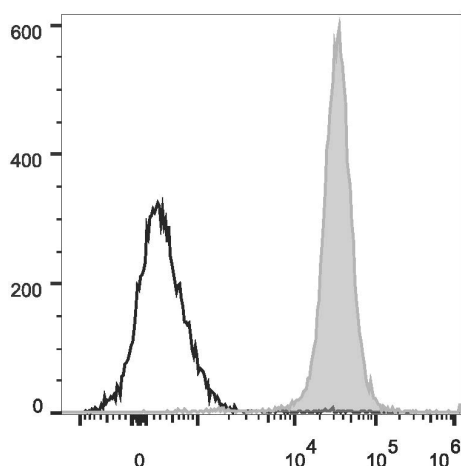
**Conjugation:** PerCP/Cyanine5.5

PerCP/Cyanine5.5 is designed to be excited by the blue laser (488 nm) and detected using an optical filter centered near 675 nm (e.g., a 690/50 nm bandpass filter).

## Recommended usage

Each lot of this antibody is quality control tested by flow cytometric analysis. Please check your vial before the experiment. Since applications vary, the appropriate dilutions must be determined for individual use. We suggest each investigator should titrate the reagent to obtain optimal results [The recommended concentration is 0.1-1  $\mu\text{g}/10^6$  cells in 100  $\mu\text{L}$  volume].

## Product data



Rat splenocytes are stained with PerCP/Cyanine5.5 Anti-Rat CD45 Antibody (filled gray histogram). Unstained splenocytes (empty black histogram) are used as control.

## Related Information

1. Sample Preparation for Flow Cytometry <https://www.elabscience.com/List-detail-5594.html>
2. Staining Cell Surface Targets for Flow Cytometry <https://www.elabscience.com/List-detail-5568.html>
3. Flow Cytometry Troubleshooting Tips <https://www.elabscience.com/List-detail-5593.html>
4. How to select the appropriate detection channel through the spectrogram? <https://www.elabscience.com/List-detail-459742.html>

### For Research Use Only

Thank you for your recent purchase.

If you would like to learn more about antibodies, please visit [www.elabscience.com](http://www.elabscience.com).

**Focus on your research  
Service for life science**

Applications: Activ- Activation; Block- Blocking; Separation- Cell Separation ; Cell Sep-Neg- Cell Separation by Negative Selection; FA- Functional Assay; Neut- Neutralization; Stim- Stimulation; FCM- Flow Cytometry; ICFCM: Intracellular Staining for Flow Cytometry; WB- Western Blotting; IHC- Immunohistochemistry; IF- Immunofluorescence; IP- Immunoprecipitation