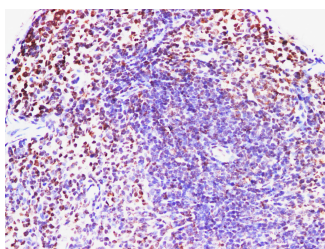


## IFNAR1 Polyclonal Antibody

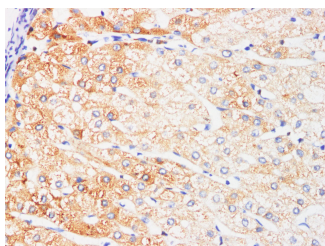
<b>Catalog No.</b>	E-AB-40307	<b>Reactivity</b>	H,M
<b>Storage</b>	Store at -20°C. Avoid freeze / thaw cycles.	<b>Host</b>	Rabbit
<b>Applications</b>	IHC	<b>Isotype</b>	IgG

**Note:** Centrifuge before opening to ensure complete recovery of vial contents.

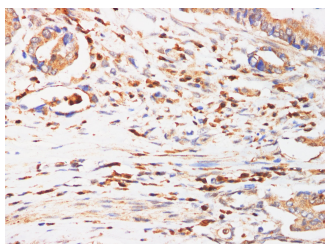
### Images



Immunohistochemistry of paraffin-embedded Mouse spleen using IFNAR1 Polyclonal Antibody at dilution of 1:200.



Immunohistochemistry of paraffin-embedded Human liver using IFNAR1 Polyclonal Antibody at dilution of 1:200.



Immunohistochemistry of paraffin-embedded Human Duodenum cancer using IFNAR1 Polyclonal Antibody at dilution of 1:200.

### Immunogen Information

<b>Immunogen</b>	Recombinant Mouse Interferon alpha/beta receptor 1 protein
<b>GeneID</b>	15975
<b>Swissprot</b>	P33896
<b>Synonyms</b>	interferon receptor 1, Interferon-alpha receptor, Type I interferon receptor 1

### Product Information

<b>Buffer</b>	PBS with 0.05% Proclin300 and 50% glycerol, pH7.4.
<b>Purify</b>	Antigen Affinity Purification
<b>Dilution</b>	IHC 1:100-1:300

### Background

IFNAR1 (Interferon Alpha And Beta Receptor Subunit 1) is a Protein Coding gene. Diseases associated with IFNAR1 include Septicemic Plague and Hepatitis C. Among its related pathways are Type I Interferon Signaling Pathways and Immune response IFN alpha/beta signaling pathway. GO annotations related to this gene include interferon receptor activity and type I interferon receptor activity. An important paralog of this gene is ENSG00000249624. The protein encoded by this gene is a type I membrane protein that forms one of the two chains of a receptor for interferons alpha and beta. Binding and activation of the receptor stimulates Janus protein kinases, which in turn phosphorylate several proteins, including STAT1 and STAT2. The encoded protein also functions as an antiviral factor.

#### For Research Use Only

Thank you for your recent purchase.  
 If you would like to learn more about antibodies, please visit [www.elabscience.com](http://www.elabscience.com).

**Focus on your research  
 Service for life science**

Applications: WB-Western Blot IHC-Immunohistochemistry IF-Immunofluorescence IP-Immunoprecipitation FC-Flow cytometry ChIP-Chromatin Immunoprecipitation Reactivity: H-Human R-Rat M-Mouse Mk-Monkey Dg-Dog Ch-Chicken Hm-Hamster Rb-Rabbit Sh-Sheep Pg-Pig Z-Zebrafish X-Xenopus C-Cow.