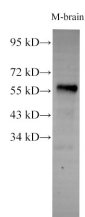


## AKT1S1 Polyclonal Antibody

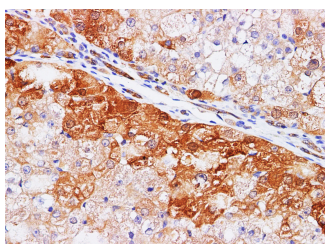
<b>Catalog No.</b>	E-AB-40313	<b>Reactivity</b>	M,R
<b>Storage</b>	Store at -20°C. Avoid freeze / thaw cycles.	<b>Host</b>	Rabbit
<b>Applications</b>	WB,IHC	<b>Isotype</b>	IgG

**Note:** Centrifuge before opening to ensure complete recovery of vial contents.

### Images



Western Blot analysis of Mouse brain using AKT1S1 Polyclonal Antibody at dilution of 1:2000.



Immunohistochemistry of paraffin-embedded Rat liver using AKT1S1 Polyclonal Antibody at dilution of 1:200.

### Immunogen Information

<b>Immunogen</b>	Recombinant Mouse RAC-alpha serine/threonine-protein kinase protein
<b>GeneID</b>	11651
<b>Swissprot</b>	P31750
<b>Synonyms</b>	AKTS1,Lobe,MGC2865,PRAS40,PRAS,PRAS40,Proline rich akt substrate,Proline-rich AKT1 substrate 1

### Product Information

<b>Calculated MW</b>	56 kDa
<b>Observed MW</b>	56 kDa
<b>Buffer</b>	PBS with 0.05% Proclin300 and 50% glycerol, pH7.4.
<b>Purify</b>	Antigen Affinity Purification
<b>Dilution</b>	WB 1:500-1:3000 IHC 1:100-1:300

### Background

AKT1S1 is a proline-rich substrate of AKT (MIM 164730) that binds 14-3-3 protein (see YWHAH, MIM 113508) when phosphorylated.

#### For Research Use Only

Thank you for your recent purchase.  
 If you would like to learn more about antibodies, please visit [www.elabscience.com](http://www.elabscience.com).

**Focus on your research  
 Service for life science**

Applications:WB-Western Blot IHC-Immunohistochemistry IF-Immunofluorescence IP-Immunoprecipitation FC-Flow cytometry ChIP-Chromatin Immunoprecipitation Reactivity: H-Human R-Rat M-Mouse Mk-Monkey Dg-Dog Ch-Chicken Hm-Hamster Rb-Rabbit Sh-Sheep Pg-Pig Z-Zebrafish X-Xenopus C-Cow.