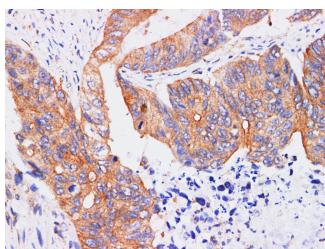


## REG4 Polyclonal Antibody

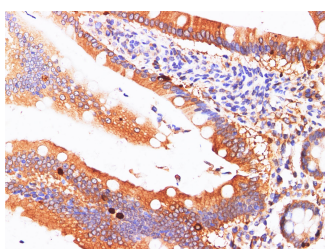
<b>Catalog No.</b>	E-AB-40314	<b>Reactivity</b>	H,M
<b>Storage</b>	Store at -20°C. Avoid freeze / thaw cycles.	<b>Host</b>	Rabbit
<b>Applications</b>	IHC	<b>Isotype</b>	IgG

**Note:** Centrifuge before opening to ensure complete recovery of vial contents.

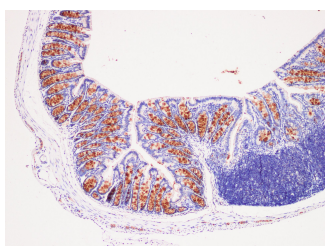
### Images



Immunohistochemistry of paraffin-embedded Human colon using REG4 Polyclonal Antibody at dilution of 1:200.



Immunohistochemistry of paraffin-embedded Human duodenum using REG4 Polyclonal Antibody at dilution of 1:200.



Immunohistochemistry of paraffin-embedded Mouse colon using REG4 Polyclonal Antibody at dilution of 1:200 [100x].

### Immunogen Information

<b>Immunogen</b>	Recombinant Mouse Regenerating islet-derived protein 4 protein
<b>GeneID</b>	67709
<b>Swissprot</b>	Q9D8G5
<b>Synonyms</b>	Gastrointestinal secretory protein, GISP, Reg IV, REG like protein, REG-4, REG-like protein, Reg4

### Product Information

<b>Buffer</b>	PBS with 0.05% Proclin300 and 50% glycerol, pH7.4.
<b>Purify</b>	Antigen Affinity Purification
<b>Dilution</b>	IHC 1:100-1:400

### Background

Calcium-independent lectin displaying mannose-binding specificity and able to maintain carbohydrate recognition activity in an acidic environment. May be involved in inflammatory and metaplastic responses of the gastrointestinal epithelium.

#### For Research Use Only

Thank you for your recent purchase.  
 If you would like to learn more about antibodies, please visit [www.elabscience.com](http://www.elabscience.com).

**Focus on your research  
 Service for life science**

Applications: WB-Western Blot IHC-Immunohistochemistry IF-Immunofluorescence IP-Immunoprecipitation FC-Flow cytometry ChIP-Chromatin Immunoprecipitation Reactivity: H-Human R-Rat M-Mouse Mk-Monkey Dg-Dog Ch-Chicken Hm-Hamster Rb-Rabbit Sh-Sheep Pg-Pig Z-Zebrafish X-Xenopus C-Cow.