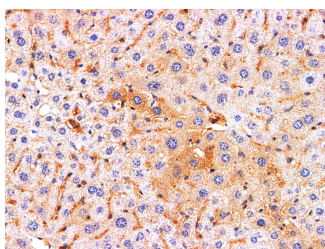


REG4 Polyclonal Antibody

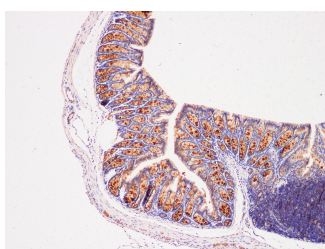
| | | | |
|---------------------|---|-------------------|--------|
| Catalog No. | E-AB-40315 | Reactivity | M,R |
| Storage | Store at -20°C. Avoid freeze / thaw cycles. | Host | Rabbit |
| Applications | IHC | Isotype | IgG |

Note: Centrifuge before opening to ensure complete recovery of vial contents.

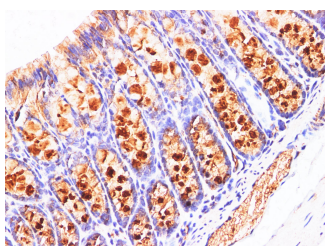
Images



Immunohistochemistry of paraffin-embedded Rat liver using REG4 Polyclonal Antibody at dilution of 1:200.



Immunohistochemistry of paraffin-embedded Mouse colon using REG4 Polyclonal Antibody at dilution of 1:200.



Immunohistochemistry of paraffin-embedded Mouse colon using REG4 Polyclonal Antibody at dilution of 1:200.

Immunogen Information

| | |
|------------------|--|
| Immunogen | Recombinant Rat Regenerating islet-derived protein 4 protein |
| GeneID | 445583 |
| Swissprot | Q68AX7 |
| Synonyms | Gastrointestinal secretory protein, GISP, Reg IV, REG-4, REGIV, RELP |

Product Information

| | |
|-----------------|--|
| Buffer | PBS with 0.05% Proclin300 and 50% glycerol, pH7.4. |
| Purify | Antigen Affinity Purification |
| Dilution | IHC 1:100-1:300 |

Background

The protein encoded by this gene is a member of the S100 family of proteins containing 2 EF-hand calcium-binding motifs. S100 proteins are localized in the cytoplasm and/or nucleus of a wide range of cells, and involved in the regulation of a number of cellular processes such as cell cycle progression and differentiation. S100 genes include at least 13 members which are located as a cluster on chromosome 1q21.

For Research Use Only

Thank you for your recent purchase.
 If you would like to learn more about antibodies, please visit www.elabscience.com.

**Focus on your research
 Service for life science**

Applications: WB-Western Blot IHC-Immunohistochemistry IF-Immunofluorescence IP-Immunoprecipitation FC-Flow cytometry ChIP-Chromatin Immunoprecipitation Reactivity: H-Human R-Rat M-Mouse Mk-Monkey Dg-Dog Ch-Chicken Hm-Hamster Rb-Rabbit Sh-Sheep Pg-Pig Z-Zebrafish X-Xenopus C-Cow.