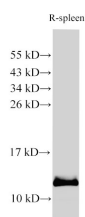


## S100A9 Polyclonal Antibody

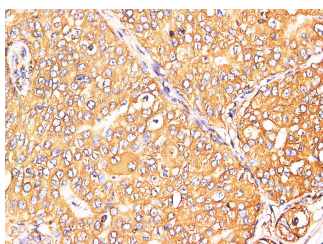
<b>Catalog No.</b>	E-AB-40317	<b>Reactivity</b>	H,M,R
<b>Storage</b>	Store at -20°C. Avoid freeze / thaw cycles.	<b>Host</b>	Rabbit
<b>Applications</b>	WB,IHC	<b>Isotype</b>	IgG

**Note:** Centrifuge before opening to ensure complete recovery of vial contents.

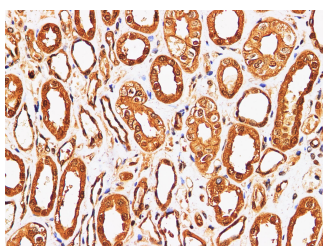
### Images



Western Blot analysis of Rat spleen using S100A9 Polyclonal Antibody at dilution of 1:1000.



Immunohistochemistry of paraffin-embedded Human breast cancer using S100A9 Polyclonal Antibody at dilution of 1:200.



Immunohistochemistry of paraffin-embedded Human kidney using S100A9 Polyclonal Antibody at dilution of 1:200.

### Immunogen Information

<b>Immunogen</b>	Recombinant Rat Protein S100-A9 protein
<b>GeneID</b>	94195
<b>Swissprot</b>	P50116
<b>Synonyms</b>	Leukocyte L1 complex heavy chain,60B8AG,CAGB,S100A9,S10A9

### Product Information

<b>Calculated MW</b>	13 kDa
<b>Observed MW</b>	13 kDa
<b>Buffer</b>	PBS with 0.05% Proclin300 and 50% glycerol, pH7.4.
<b>Purify</b>	Antigen Affinity Purification
<b>Dilution</b>	WB 1:500-1:1000 IHC 1:100-1:300

### Background

The protein encoded by this gene is a member of the S100 family of proteins containing 2 EF-hand calcium-binding motifs. S100 proteins are localized in the cytoplasm and/or nucleus of a wide range of cells, and involved in the regulation of a number of cellular processes such as cell cycle progression and differentiation. S100 genes include at least 13 members which are located as a cluster on chromosome 1q21.

#### For Research Use Only

Thank you for your recent purchase.  
 If you would like to learn more about antibodies, please visit [www.elabscience.com](http://www.elabscience.com).

**Focus on your research  
 Service for life science**

Applications:WB-Western Blot IHC-Immunohistochemistry IF-Immunofluorescence IP-Immunoprecipitation FC-Flow cytometry ChIP-Chromatin Immunoprecipitation Reactivity: H-Human R-Rat M-Mouse Mk-Monkey Dg-Dog Ch-Chicken Hm-Hamster Rb-Rabbit Sh-Sheep Pg-Pig Z-Zebrafish X-Xenopus C-Cow.