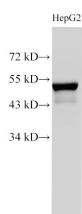


CK-7 Polyclonal Antibody

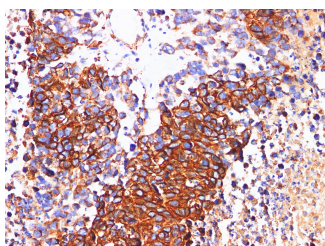
Catalog No.	E-AB-40322	Reactivity	H,M,R
Storage	Store at -20°C. Avoid freeze / thaw cycles.	Host	Rabbit
Applications	WB,IHC	Isotype	IgG

Note: Centrifuge before opening to ensure complete recovery of vial contents.

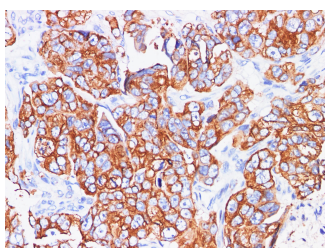
Images



Western Blot analysis of HepG2 using CK-7 Polyclonal Antibody at dilution of 1:1000.



Immunohistochemistry of paraffin-embedded Human cervical using CK-7 Polyclonal Antibody at dilution of 1:200.



Immunohistochemistry of paraffin-embedded Human ovary using CK-7 Polyclonal Antibody at dilution of 1:200.

Immunogen Information

Immunogen	Recombinant Human Keratin, type II cytoskeletal 7 protein
GeneID	3855
Swissprot	P08729
Synonyms	CK 7,Krt2-7,KRT7,Sarcolectin,SCL,Type-II keratin Kb7

Product Information

Calculated MW	51 kDa
Observed MW	51 kDa
Buffer	PBS with 0.05% Proclin300 and 50% glycerol, pH7.4.
Purify	Antigen Affinity Purification
Dilution	WB 1:1000-1:2000 IHC 1:100-1:500

Background

Keratins are a large family of proteins that form the intermediate filament cytoskeleton of epithelial cells, which are classified into two major sequence types. Type I keratins are a group of acidic intermediate filament proteins, including K9–K23, and the hair keratins Ha1–Ha8. Type II keratins are the basic or neutral counterparts to the acidic type I keratins, including K1–K8, and the hair keratins, Hb1–Hb6. KRT7, also named as cytokeratin 7, is one member of type II basic cytokeratin. It is specifically expressed in the simple epithelia lining the cavities of the internal organs and in the gland ducts and blood vessels, and their neoplasms. KRT7 is marker of epithelial tissues, but not present in carcinomas of stratified squamous cell origin. This antibody is specifically against KRT7.

For Research Use Only

Thank you for your recent purchase.
 If you would like to learn more about antibodies, please visit www.elabscience.com.

**Focus on your research
 Service for life science**

Applications: WB-Western Blot IHC-Immunohistochemistry IF-Immunofluorescence IP-Immunoprecipitation FC-Flow cytometry ChIP-Chromatin Immunoprecipitation Reactivity: H-Human R-Rat M-Mouse Mk-Monkey Dg-Dog Ch-Chicken Hm-Hamster Rb-Rabbit Sh-Sheep Pg-Pig Z-Zebrafish X-Xenopus C-Cow.