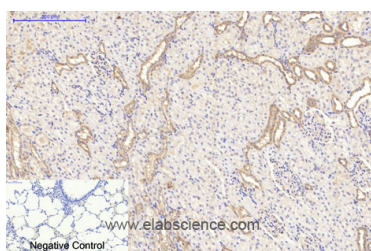


CD20 Monoclonal Antibody

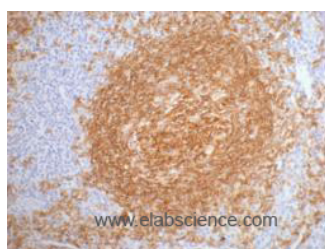
Catalog No.	E-AB-22011	Reactivity	H,M,R
Storage	Store at -20°C. Avoid freeze / thaw cycles.	Host	Mouse
Applications	IHC-p	Isotype	IgG

Note: Centrifuge before opening to ensure complete recovery of vial contents.

Images



Immunohistochemistry of paraffin-embedded Rat lung tissue using CD20 Monoclonal Antibody at dilution of 1:200.



Immunohistochemistry of paraffin-embedded Human tonsil tissue using CD20 Monoclonal Antibody at dilution of 1:200.

Immunogen Information

Immunogen	Synthetic Peptide
Swissprot	P11836
Synonyms	MS4A1,CD20,B-lymphocyte antigen CD20,B-lymphocyte surface antigen B1,Bp35,Leukocyte surface antigen Leu-16,Membrane-spanning 4-domains subfamily A member 1,CD20

Product Information

Buffer	PBS with 0.02% sodium azide and 50% glycerol pH 7.4.
Purify	Protein A purification
Clone No.	Clone:1A3
Dilution	IHC 1:50-200

Background

This gene encodes a member of the membrane-spanning 4A gene family. Members of this nascent protein family are characterized by common structural features and similar intron/exon splice boundaries and display unique expression patterns among hematopoietic cells and nonlymphoid tissues. This gene encodes a B-lymphocyte surface molecule which plays a role in the development and differentiation of B-cells into plasma cells. This family member is localized to 11q12, among a cluster of family members. Alternative splicing of this gene results in two transcript variants which encode the same protein.

For Research Use Only

Thank you for your recent purchase.
 If you would like to learn more about antibodies, please visit www.elabscience.com.

**Focus on your research
 Service for life science**

Applications:WB-Western Blot IHC-Immunohistochemistry IF-Immunofluorescence IP-Immunoprecipitation FC-Flow cytometry ChIP-Chromatin Immunoprecipitation Reactivity: H-Human R-Rat M-Mouse Mk-Monkey Dg-Dog Ch-Chicken Hm-Hamster Rb-Rabbit Sh-Sheep Pg-Pig Z-Zebrafish X-Xenopus C-Cow.