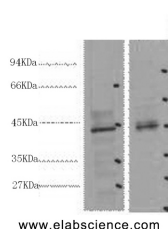


CDX2 Monoclonal Antibody

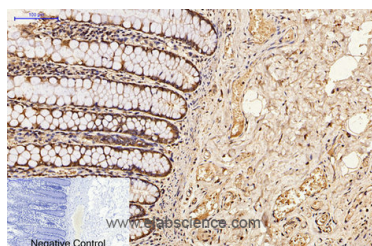
Catalog No.	E-AB-22020	Reactivity	H,M,R
Storage	Store at -20°C. Avoid freeze / thaw cycles.	Host	Mouse
Applications	WB,IHC-p,IF	Isotype	IgG

Note: Centrifuge before opening to ensure complete recovery of vial contents.

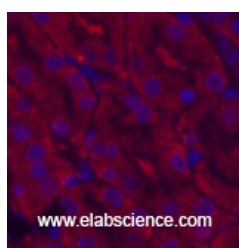
Images



Western Blot analysis of 1) 293T, 2) Mouse heart using CDX2 Monoclonal Antibody at dilution of 1:2000.



Immunohistochemistry of paraffin-embedded Human colon tissue using CDX2 Monoclonal Antibody at dilution of 1:200.



Immunofluorescence analysis of Mouse kidney tissue using CDX2 Monoclonal Antibody at dilution of 1:200.

Immunogen Information

Immunogen	Synthetic Peptide
Swissprot	Q99626
Synonyms	CDX2,CDX3,Homeobox protein CDX-2,CDX-3,Caudal-type homeobox protein 2

Product Information

Calculated MW	34kDa
Observed MW	42kDa
Buffer	PBS with 0.02% sodium azide and 50% glycerol pH 7.4.
Purify	Protein A purification
Clone No.	Clone:1A5
Dilution	WB 1:500-1:2000, IHC 1:100-1:300, IF 1:100-1:300

Background

This gene is a member of the caudal-related homeobox transcription factor gene family. The encoded protein is a major regulator of intestine-specific genes involved in cell growth and differentiation. This protein also plays a role in early embryonic development of the intestinal tract. Aberrant expression of this gene is associated with intestinal inflammation and tumorigenesis.

For Research Use Only

Thank you for your recent purchase.
 If you would like to learn more about antibodies, please visit www.elabscience.com.

**Focus on your research
 Service for life science**

Applications:WB-Western Blot IHC-Immunohistochemistry IF-Immunofluorescence IP-Immunoprecipitation FC-Flow cytometry ChIP-Chromatin Immunoprecipitation Reactivity: H-Human R-Rat M-Mouse Mk-Monkey Dg-Dog Ch-Chicken Hm-Hamster Rb-Rabbit Sh-Sheep Pg-Pig Z-Zebrafish X-Xenopus C-Cow.