

CD66e Monoclonal Antibody

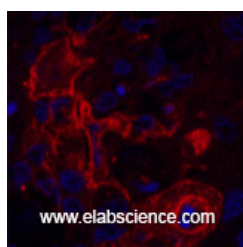
Catalog No.	E-AB-22024	Reactivity	H
Storage	Store at -20°C. Avoid freeze / thaw cycles.	Host	Mouse
Applications	IHC-p,IF	Isotype	IgG

Note: Centrifuge before opening to ensure complete recovery of vial contents.

Images



Immunohistochemistry of paraffin-embedded Human colon cancer tissue using CD66e Monoclonal Antibody at dilution of 1:200.



Immunofluorescence analysis of Human lung cancer tissue using CD66e Monoclonal Antibody at dilution of 1:200.

Immunogen Information

Immunogen	Synthetic Peptide
Swissprot	P06731
Synonyms	CEACAM5,CEA,Carcinoembryonic antigen-related cell adhesion molecule 5,Carcinoembryonic antigen,CEA,Meconium antigen 100,CD66e

Product Information

Buffer	PBS with 0.02% sodium azide and 50% glycerol pH 7.4.
Purify	Protein A purification
Clone No.	Clone:1A2
Dilution	IHC 1:100-1:300, IF 1:50-200

Background

Carcinoembryonic antigen-related cell adhesion molecule 5 (CEACAM5) also known as CD66e (Cluster of Differentiation 66e), is a human gene. Members of the CEACAM subfamily, including CEACAM5, belong to the CEA gene family. CD66E is a well known tumor marker and a heavily glycosylated GPI-linked cell surface molecule.

For Research Use Only

Thank you for your recent purchase.
 If you would like to learn more about antibodies, please visit www.elabscience.com.

**Focus on your research
 Service for life science**

Applications:WB-Western Blot IHC-Immunohistochemistry IF-Immunofluorescence IP-Immunoprecipitation FC-Flow cytometry ChIP-Chromatin Immunoprecipitation Reactivity: H-Human R-Rat M-Mouse Mk-Monkey Dg-Dog Ch-Chicken Hm-Hamster Rb-Rabbit Sh-Sheep Pg-Pig Z-Zebrafish X-Xenopus C-Cow.