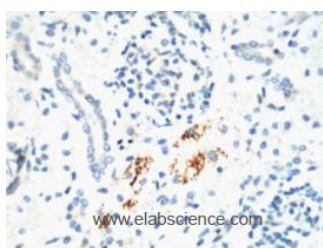


## KIF7 Monoclonal Antibody

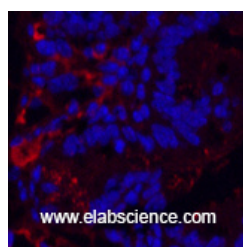
<b>Catalog No.</b>	E-AB-22026	<b>Reactivity</b>	H,M,R
<b>Storage</b>	Store at -20°C. Avoid freeze / thaw cycles.	<b>Host</b>	Mouse
<b>Applications</b>	IHC-p,IF	<b>Isotype</b>	IgG

**Note:** Centrifuge before opening to ensure complete recovery of vial contents.

### Images



Immunohistochemistry of paraffin-embedded Mouse kidney tissue using KIF7 Monoclonal Antibody at dilution of 1:200.



Immunofluorescence analysis of Mouse colon tissue using KIF7 Monoclonal Antibody at dilution of 1:200.

### Immunogen Information

<b>Immunogen</b>	Synthetic Peptide
<b>Swissprot</b>	Q2M1P5
<b>Synonyms</b>	EQYK340,kif7,KIF7,kinesin family member 7,kinesin like protein KIF7,Kinesin-like protein kif7,UNQ340

### Product Information

<b>Buffer</b>	PBS with 0.02% sodium azide and 50% glycerol pH 7.4.
<b>Purify</b>	Protein A purification
<b>Clone No.</b>	Clone:3I4
<b>Dilution</b>	IHC 1:100-1:300, IF 1:50-200

### Background

This gene encodes a cilia-associated protein belonging to the kinesin family. This protein plays a role in the sonic hedgehog (SHH) signaling pathway through the regulation of GLI transcription factors. It functions as a negative regulator of the SHH pathway by preventing inappropriate activation of GLI2 in the absence of ligand, and as a positive regulator by preventing the processing of GLI3 into its repressor form. Mutations in this gene have been associated with various ciliopathies. KIF7 (Kinesin Family Member 7) is a Protein Coding gene. Diseases associated with KIF7 include Acrocallosal Syndrome and Hydroletharus Syndrome 2. Among its related pathways are Signaling by Hedgehog and Signaling by GPCR. GO annotations related to this gene include ATPase activity and microtubule motor activity. An important paralog of this gene is KIF27.

#### For Research Use Only

Thank you for your recent purchase.  
 If you would like to learn more about antibodies, please visit [www.elabscience.com](http://www.elabscience.com).

**Focus on your research  
 Service for life science**

Applications: WB-Western Blot IHC-Immunohistochemistry IF-Immunofluorescence IP-Immunoprecipitation FC-Flow cytometry ChIP-Chromatin Immunoprecipitation Reactivity: H-Human R-Rat M-Mouse Mk-Monkey Dg-Dog Ch-Chicken Hm-Hamster Rb-Rabbit Sh-Sheep Pg-Pig Z-Zebrafish X-Xenopus C-Cow.