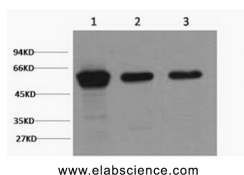


Vimentin Monoclonal Antibody

| | | | |
|---------------------|---|-------------------|-------|
| Catalog No. | E-AB-22085 | Reactivity | H,M,R |
| Storage | Store at -20°C. Avoid freeze / thaw cycles. | Host | Mouse |
| Applications | WB | Isotype | IgG |

Note: Centrifuge before opening to ensure complete recovery of vial contents.

Images



Western Blot analysis of 1) HeLa, 2) Mouse brain, 3) Rat brain using Vimentin Monoclonal Antibody at dilution of 1:2000.

Immunogen Information

| | |
|------------------|---------------------|
| Immunogen | Recombinant Protein |
| Swissprot | P08670 |
| Synonyms | VIM,Vimentin |

Product Information

| | |
|----------------------|--|
| Calculated MW | 54kDa |
| Observed MW | 50-57kDa |
| Buffer | PBS with 0.02% sodium azide and 50% glycerol pH 7.4. |
| Purify | Protein A purification |
| Clone No. | Clone:2F4 |
| Dilution | WB 1:1000-3000 |

Background

Vimentins are class-III intermediate filaments found in various non-epithelial cells, especially mesenchymal cells. Vimentin is attached to the nucleus, endoplasmic reticulum, and mitochondria, either laterally or terminally.

For Research Use Only

Thank you for your recent purchase.

If you would like to learn more about antibodies, please visit www.elabscience.com.

**Focus on your research
 Service for life science**

Applications:WB-Western Blot IHC-Immunohistochemistry IF-Immunofluorescence IP-Immunoprecipitation FC-Flow cytometry ChIP-Chromatin Immunoprecipitation Reactivity: H-Human R-Rat M-Mouse Mk-Monkey Dg-Dog Ch-Chicken Hm-Hamster Rb-Rabbit Sh-Sheep Pg-Pig Z-Zebrafish X-Xenopus C-Cow.