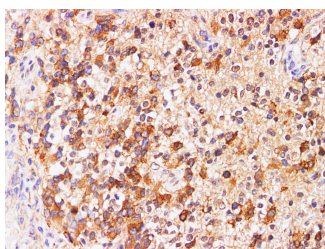


## PRL Polyclonal Antibody

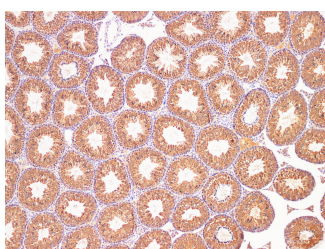
<b>Catalog No.</b>	E-AB-40342	<b>Reactivity</b>	H,M,R
<b>Storage</b>	Store at -20°C. Avoid freeze / thaw cycles.	<b>Host</b>	Rabbit
<b>Applications</b>	IHC	<b>Isotype</b>	IgG

**Note:** Centrifuge before opening to ensure complete recovery of vial contents.

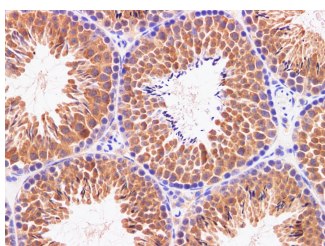
### Images



Immunohistochemistry of paraffin-embedded Human glioma using PRL Polyclonal Antibody at dilution of 1:200



Immunohistochemistry of paraffin-embedded Mouse testis using PRL Polyclonal Antibody at dilution of 1:200(100×)



Immunohistochemistry of paraffin-embedded Mouse testis using PRL Polyclonal Antibody at dilution of 1:200(400×)

### Immunogen Information

<b>Immunogen</b>	Recombinant Mouse Prolactin protein
<b>GeneID</b>	19109
<b>Swissprot</b>	P06879
<b>Synonyms</b>	CDC 47, CDC47 homolog, MCM 2, MCM 7, Minichromosome Maintenance 7, PNAS 146, PPP1R104, P85MCM

### Product Information

<b>Buffer</b>	PBS with 0.05% Proclin300 and 50% glycerol, pH7.4.
<b>Purify</b>	Antigen Affinity Purification
<b>Dilution</b>	IHC 1:100-1:300

### Background

This gene encodes the anterior pituitary hormone prolactin. This secreted hormone is a growth regulator for many tissues, including cells of the immune system. It may also play a role in cell survival by suppressing apoptosis, and it is essential for lactation. Alternative splicing results in multiple transcript variants that encode the same protein.

#### For Research Use Only

Thank you for your recent purchase.  
 If you would like to learn more about antibodies, please visit [www.elabscience.com](http://www.elabscience.com).

**Focus on your research  
 Service for life science**

Applications:WB-Western Blot IHC-Immunohistochemistry IF-Immunofluorescence IP-Immunoprecipitation FC-Flow cytometry ChIP-Chromatin Immunoprecipitation Reactivity: H-Human R-Rat M-Mouse Mk-Monkey Dg-Dog Ch-Chicken Hm-Hamster Rb-Rabbit Sh-Sheep Pg-Pig Z-Zebrafish X-Xenopus C-Cow.