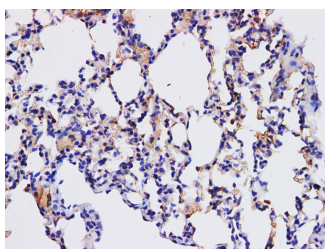


HPGD Polyclonal Antibody

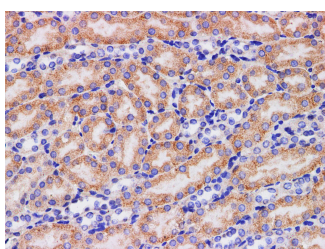
Catalog No.	E-AB-40343	Reactivity	M
Storage	Store at -20°C. Avoid freeze / thaw cycles.	Host	Rabbit
Applications	IHC	Isotype	IgG

Note: Centrifuge before opening to ensure complete recovery of vial contents.

Images



Immunohistochemistry of paraffin-embedded Mouse lung using HPGD Polyclonal Antibody at dilution of 1:200



Immunohistochemistry of paraffin-embedded Mouse kidney using HPGD Polyclonal Antibody at dilution of 1:200

Immunogen Information

Immunogen	Recombinant Mouse 15-hydroxyprostaglandin dehydrogenase [NAD(+)] protein
GeneID	15446
Swissprot	Q8VCC1
Synonyms	15 hydroxyprostaglandin dehydrogenase, 15 PGDH, Hydroxyprostaglandin dehydrogenase 15 (NAD), PHOAR1, SDR36C1

Product Information

Buffer	PBS with 0.05% Proclin300 and 50% glycerol, pH7.4.
Purify	Antigen Affinity Purification
Dilution	IHC 1:100-1:200

Background

This gene encodes a member of the short-chain nonmetalloenzyme alcohol dehydrogenase protein family. The encoded enzyme is responsible for the metabolism of prostaglandins, which function in a variety of physiologic and cellular processes such as inflammation. Mutations in this gene result in primary autosomal recessive hypertrophic osteoarthropathy and cranioosteoarthropathy. Multiple transcript variants encoding different isoforms have been found for this gene.

For Research Use Only

Thank you for your recent purchase.
 If you would like to learn more about antibodies, please visit www.elabscience.com.

**Focus on your research
 Service for life science**

Applications: WB-Western Blot IHC-Immunohistochemistry IF-Immunofluorescence IP-Immunoprecipitation FC-Flow cytometry ChIP-Chromatin Immunoprecipitation Reactivity: H-Human R-Rat M-Mouse Mk-Monkey Dg-Dog Ch-Chicken Hm-Hamster Rb-Rabbit Sh-Sheep Pg-Pig Z-Zebrafish X-Xenopus C-Cow.