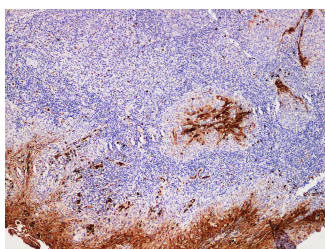


## S100P Polyclonal Antibody

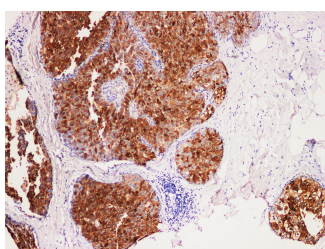
<b>Catalog No.</b>	E-AB-40346	<b>Reactivity</b>	H
<b>Storage</b>	Store at -20°C. Avoid freeze / thaw cycles.	<b>Host</b>	Rabbit
<b>Applications</b>	IHC	<b>Isotype</b>	IgG

**Note:** Centrifuge before opening to ensure complete recovery of vial contents.

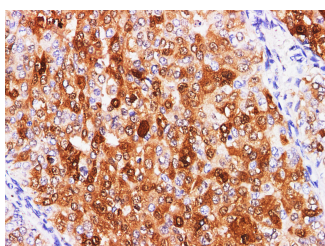
### Images



Immunohistochemistry of paraffin-embedded Human tonsil using S100P Polyclonal Antibody at dilution of 1:200



Immunohistochemistry of paraffin-embedded Human breast cancer using S100P Polyclonal Antibody at dilution of 1:200(100x)



Immunohistochemistry of paraffin-embedded Human breast cancer using S100P Polyclonal Antibody at dilution of 1:200(400x)

### Immunogen Information

<b>Immunogen</b>	Recombinant Human Protein S100-P protein
<b>GeneID</b>	6286
<b>Swissprot</b>	P25815
<b>Synonyms</b>	MIG9, Migration inducing gene 9, Protein S100-E, Protein S100-P, S100 calcium binding protein P, S100 P, S100E

### Product Information

<b>Buffer</b>	PBS with 0.05% Proclin300 and 50% glycerol, pH7.4.
<b>Purify</b>	Antigen Affinity Purification
<b>Dilution</b>	IHC 1:100-1:400

### Background

The protein encoded by this gene is a member of the S100 family of proteins containing 2 EF-hand calcium-binding motifs. S100 proteins are localized in the cytoplasm and/or nucleus of a wide range of cells, and involved in the regulation of a number of cellular processes such as cell cycle progression and differentiation. S100 genes include at least 13 members which are located as a cluster on chromosome 1q21; however, this gene is located at 4p16. This protein, in addition to binding Ca<sup>2+</sup>, also binds Zn<sup>2+</sup> and Mg<sup>2+</sup>.

#### For Research Use Only

Thank you for your recent purchase.  
 If you would like to learn more about antibodies, please visit [www.elabscience.com](http://www.elabscience.com).

**Focus on your research  
 Service for life science**

Applications: WB-Western Blot IHC-Immunohistochemistry IF-Immunofluorescence IP-Immunoprecipitation FC-Flow cytometry ChIP-Chromatin Immunoprecipitation Reactivity: H-Human R-Rat M-Mouse Mk-Monkey Dg-Dog Ch-Chicken Hm-Hamster Rb-Rabbit Sh-Sheep Pg-Pig Z-Zebrafish X-Xenopus C-Cow.