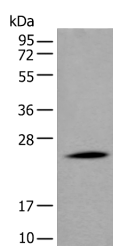


APOD Polyclonal Antibody

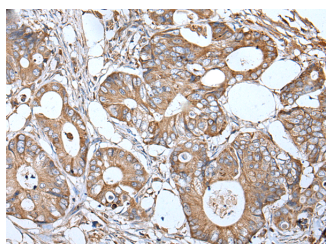
Catalog No.	E-AB-17730	Reactivity	H
Storage	Store at -20°C. Avoid freeze / thaw cycles.	Host	Rabbit
Applications	WB,IHC,ELISA	Isotype	IgG

Note: Centrifuge before opening to ensure complete recovery of vial contents.

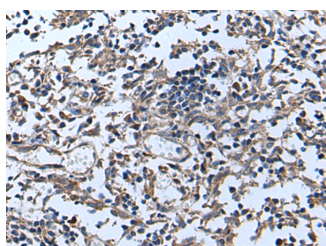
Images



Western blot analysis of Human liver tissue lysate using APOD Polyclonal Antibody at dilution of 1:550



Immunohistochemistry of paraffin-embedded Human colorectal cancer tissue using APOD Polyclonal Antibody at dilution of 1:55(x200)



Immunohistochemistry of paraffin-embedded Human tonsil tissue using APOD Polyclonal Antibody at dilution of 1:55(x200)

Immunogen Information

Immunogen	Synthetic peptide of human APOD
Gene Accession	NP001638
Swissprot	P05090
Synonyms	APO D,Apo-D,ApoD,APOD protein,APOD,Apolipoprotein D,ApolipoproteinD

Product Information

Calculated MW	21 kDa
Observed MW	Refer to figures
Buffer	PBS with 0.05% NaN3 and 40% Glycerol,pH7.4
Purify	Antigen affinity purification
Dilution	WB 1:500-1:2000, IHC 1:40-1:200, ELISA 1:5000-1:10000

Background

Apolipoprotein D (ApoD) is a member of the lipocalin superfamily of ligand transporters, and has been implicated in the transport of small hydrophobic molecules. ApoD is also a component of plasma high-density lipoproteins (HDL). Alteration of ApoD expression has been linked to multiple neurological disorders, including Alzheimer's disease.

For Research Use Only

Thank you for your recent purchase.
 If you would like to learn more about antibodies, please visit www.elabscience.com.

Focus on your research
Service for life science

Applications:WB-Western Blot IHC-Immunohistochemistry IF-Immunofluorescence IP-Immunoprecipitation FC-Flow cytometry ChIP-Chromatin Immunoprecipitation Reactivity: H-Human R-Rat M-Mouse Mk-Monkey Dg-Dog Ch-Chicken Hm-Hamster Rb-Rabbit Sh-Sheep Pg-Pig Z-Zebrafish X-Xenopus C-Cow.