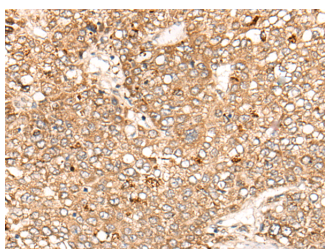


## C1S Polyclonal Antibody

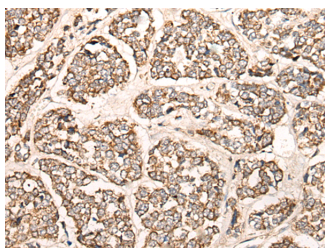
|                     |   |                   |        |
|---------------------|---|-------------------|--------|
| <b>Catalog No.</b>  | E-AB-17749                                  | <b>Reactivity</b> | H      |
| <b>Storage</b>      | Store at -20°C. Avoid freeze / thaw cycles. | <b>Host</b>       | Rabbit |
| <b>Applications</b> | IHC,ELISA                                   | <b>Isotype</b>    | IgG    |

**Note:** Centrifuge before opening to ensure complete recovery of vial contents.

### Images



Immunohistochemistry of paraffin-embedded Human liver cancer tissue using C1S Polyclonal Antibody at dilution of 1:55(×200)



Immunohistochemistry of paraffin-embedded Human esophagus cancer tissue using C1S Polyclonal Antibody at dilution of 1:55(×200)

### Immunogen Information

|                       |  |
|-----------------------|--|
| <b>Immunogen</b>      | Synthetic peptide of human C1S                               |
| <b>Gene Accession</b> | NP001725   |
| <b>Swissprot</b>      | P09871   |
| <b>Synonyms</b>       | Basic proline rich peptide IB 1,C1 esterase,C1S,C1S,FLJ44757 |

### Product Information

|                 |  |
|-----------------|--|
| <b>Buffer</b>   | PBS with 0.05% NaN3 and 40% Glycerol,pH7.4 |
| <b>Purify</b>   | Antigen affinity purification              |
| <b>Dilution</b> | IHC 1:40-1:200, ELISA 1:5000-1:10000       |

### Background

This gene encodes a serine protease, which is a major constituent of the human complement subcomponent C1. C1s associates with two other complement components C1r and C1q in order to yield the first component of the serum complement system. Defects in this gene are the cause of selective C1s deficiency.

#### For Research Use Only

Thank you for your recent purchase.  
 If you would like to learn more about antibodies, please visit [www.elabscience.com](http://www.elabscience.com).

**Focus on your research  
 Service for life science**

Applications:WB-Western Blot IHC-Immunohistochemistry IF-Immunofluorescence IP-Immunoprecipitation FC-Flow cytometry ChIP-Chromatin Immunoprecipitation Reactivity: H-Human R-Rat M-Mouse Mk-Monkey Dg-Dog Ch-Chicken Hm-Hamster Rb-Rabbit Sh-Sheep Pg-Pig Z-Zebrafish X-Xenopus C-Cow.