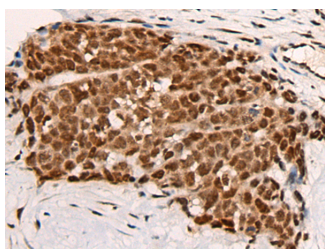


## HGH1 Polyclonal Antibody

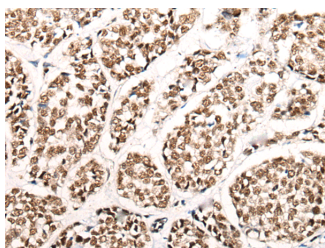
<b>Catalog No.</b>	E-AB-17755	<b>Reactivity</b>	H
<b>Storage</b>	Store at -20°C. Avoid freeze / thaw cycles.	<b>Host</b>	Rabbit
<b>Applications</b>	IHC,ELISA	<b>Isotype</b>	IgG

**Note:** Centrifuge before opening to ensure complete recovery of vial contents.

### Images



Immunohistochemistry of paraffin-embedded Human thyroid cancer tissue using HGH1 Polyclonal Antibody at dilution of 1:45(×200)



Immunohistochemistry of paraffin-embedded Human esophagus cancer tissue using HGH1 Polyclonal Antibody at dilution of 1:45(×200)

### Immunogen Information

<b>Immunogen</b>	Synthetic peptide of human HGH1
<b>Gene Accession</b>	NP057542
<b>Swissprot</b>	Q9BTY7
<b>Synonyms</b>	Brain protein 16, BRP16, C8orf30A, D15Ert4741e, F203A, Fam203a, FLJ40907, LOC51236, MGC94185

### Product Information

<b>Buffer</b>	PBS with 0.05% NaN <sub>3</sub> and 40% Glycerol, pH7.4
<b>Purify</b>	Antigen affinity purification
<b>Dilution</b>	IHC 1:30-1:150, ELISA 1:5000-1:10000

### Background

HGH1, is also known as BRP16, Brp16 is a 256 amino acid protein encoded by a gene on human chromosome 8. Made up of nearly 146 million bases, chromosome 8 encodes about 800 genes. Translocation of portions of chromosome 8 with amplifications of the c-Myc gene are found in some leukemias and lymphomas, and typically associated with a poor prognosis. Portions of chromosome 8 have been linked to schizophrenia and bipolar disorder. Trisomy 8, also known as Warkany syndrome 2, most often results in early miscarriage but is occasionally seen in a mosaic form in surviving patients who suffer to a varying degree from a number of symptoms including retarded mental and motor development, and certain facial and developmental defects. WRN is a DNA helicase encoded by chromosome 8 and shown defective in those with the early aging disorder Werner syndrome. Chromosome 8 is also associated with Pfeiffer syndrome, congenital hypothyroidism and Waardenburg syndrome.

#### For Research Use Only

Thank you for your recent purchase.  
 If you would like to learn more about antibodies, please visit [www.elabscience.com](http://www.elabscience.com).

**Focus on your research  
 Service for life science**

Applications: WB-Western Blot IHC-Immunohistochemistry IF-Immunofluorescence IP-Immunoprecipitation FC-Flow cytometry ChIP-Chromatin Immunoprecipitation Reactivity: H-Human R-Rat M-Mouse Mk-Monkey Dg-Dog Ch-Chicken Hm-Hamster Rb-Rabbit Sh-Sheep Pg-Pig Z-Zebrafish X-Xenopus C-Cow.