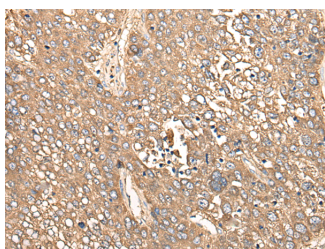


CALB1 Polyclonal Antibody

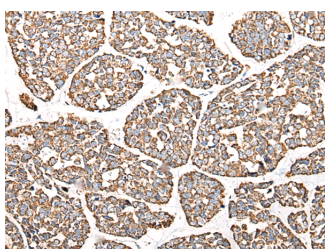
Catalog No.	E-AB-17761	Reactivity	H,M,R
Storage	Store at -20°C. Avoid freeze / thaw cycles.	Host	Rabbit
Applications	IHC,ELISA	Isotype	IgG

Note: Centrifuge before opening to ensure complete recovery of vial contents.

Images



Immunohistochemistry of paraffin-embedded Human liver cancer tissue using CALB1 Polyclonal Antibody at dilution of 1:80(×200)



Immunohistochemistry of paraffin-embedded Human esophagus cancer tissue using CALB1 Polyclonal Antibody at dilution of 1:80(×200)

Immunogen Information

Immunogen	Synthetic peptide of human CALB1
Gene Accession	NP004920
Swissprot	P05937
Synonyms	avian-type,CAB27,CALB 1,CALB,CALB1,CALB1,Calbindin,Calbindin D28,D 28K,D-28K,D28K

Product Information

Buffer	PBS with 0.05% NaN ₃ and 40% Glycerol,pH7.4
Purify	Antigen affinity purification
Dilution	IHC 1:50-1:300, ELISA 1:5000-1:10000

Background

Calbindin-D28k is a member of the calcium-binding protein superfamily that includes calmodulin and troponin C. It is a cytosolic calcium binding protein highly expressed in the distal tubule,intestines,central nervous system,primary murine osteoblast cells and in several other organs. It plays an important role in the intracellular calcium homeostasis,its strong buffering capacity prevents cytotoxic effect of high concentration of free calcium in kidney,brain,pancreas,and intestine.

For Research Use Only

Thank you for your recent purchase.
 If you would like to learn more about antibodies,please visit www.elabscience.com.

**Focus on your research
 Service for life science**

Applications:WB-Western Blot IHC-Immunohistochemistry IF-Immunofluorescence IP-Immunoprecipitation FC-Flow cytometry ChIP-Chromatin Immunoprecipitation Reactivity: H-Human R-Rat M-Mouse Mk-Monkey Dg-Dog Ch-Chicken Hm-Hamster Rb-Rabbit Sh-Sheep Pg-Pig Z-Zebrafish X-Xenopus C-Cow.