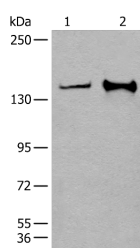


CAPN15 Polyclonal Antibody

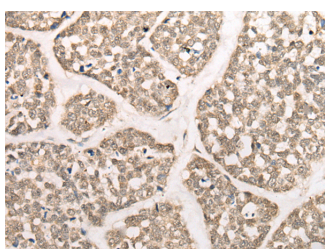
Catalog No.	E-AB-17763	Reactivity	H,M
Storage	Store at -20°C. Avoid freeze / thaw cycles.	Host	Rabbit
Applications	WB,IHC,ELISA	Isotype	IgG

Note: Centrifuge before opening to ensure complete recovery of vial contents.

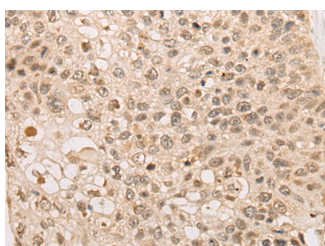
Images



Western blot analysis of HeLa and A172 cell lysates using CAPN15 Polyclonal Antibody at dilution of 1:400



Immunohistochemistry of paraffin-embedded Human esophagus cancer tissue using CAPN15 Polyclonal Antibody at dilution of 1:50(×200)



Immunohistochemistry of paraffin-embedded Human lung cancer tissue using CAPN15 Polyclonal Antibody at dilution of 1:50(×200)

Immunogen Information

Immunogen	Synthetic peptide of human CAPN15
Gene Accession	NP005623
Swissprot	O75808
Synonyms	calpain 15, Calpain-15, CAN15, CAPN15, MGC131491, Small optic lobe protein, Small optic lobes homolog, Solh

Product Information

Calculated MW	117 kDa
Observed MW	Refer to figures
Buffer	PBS with 0.05% NaN ₃ and 40% Glycerol, pH7.4
Purify	Antigen affinity purification
Dilution	WB 1:500-1:2000, IHC 1:40-1:200, ELISA 1:5000-1:10000

Background

This gene encodes a protein containing zinc-finger-like repeats and a calpain-like protease domain. The encoded protein may function as a transcription factor, RNA-binding protein, or in protein-protein interactions during visual system development.

For Research Use Only

Thank you for your recent purchase.
 If you would like to learn more about antibodies, please visit www.elabscience.com.

**Focus on your research
 Service for life science**

Applications: WB-Western Blot IHC-Immunohistochemistry IF-Immunofluorescence IP-Immunoprecipitation FC-Flow cytometry ChIP-Chromatin Immunoprecipitation Reactivity: H-Human R-Rat M-Mouse Mk-Monkey Dg-Dog Ch-Chicken Hm-Hamster Rb-Rabbit Sh-Sheep Pg-Pig Z-Zebrafish X-Xenopus C-Cow.