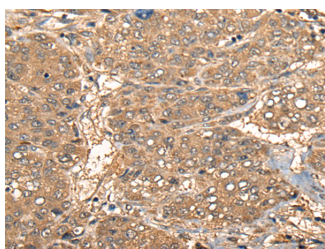


CCL27 Polyclonal Antibody

Catalog No.	E-AB-17773	Reactivity	H
Storage	Store at -20°C. Avoid freeze / thaw cycles.	Host	Rabbit
Applications	IHC,ELISA	Isotype	IgG

Note: Centrifuge before opening to ensure complete recovery of vial contents.

Images



Immunohistochemistry of paraffin-embedded Human liver cancer tissue using CCL27 Polyclonal Antibody at dilution of 1:55(×200)

Immunogen Information

Immunogen	Synthetic peptide of human CCL27
Gene Accession	NP006655
Swissprot	Q9Y4X3
Synonyms	ALP,CTACK,CTAK,ILC,PESKY,SCYA27,Skinkine, member 27,Small-inducible cytokine A27

Product Information

Buffer	PBS with 0.05% NaN ₃ and 40% Glycerol,pH7.4
Purify	Antigen affinity purification
Dilution	IHC 1:50-1:300, ELISA 1:5000-1:10000

Background

This gene is one of several CC cytokine genes clustered on the p-arm of chromosome 9. Cytokines are a family of secreted proteins involved in immunoregulatory and inflammatory processes. The CC cytokines are proteins characterized by two adjacent cysteines. The protein encoded by this gene is chemotactic for skin-associated memory T lymphocytes. This cytokine may also play a role in mediating homing of lymphocytes to cutaneous sites. It specifically binds to chemokine receptor 10 (CCR10). Studies of a similar murine protein indicate that these protein-receptor interactions have a pivotal role in T cell-mediated skin inflammation. CCL27 (C-C Motif Chemokine Ligand 27) is a Protein Coding gene. Diseases associated with CCL27 include Dermatitis and Atopic Dermatitis. Among its related pathways are Peptide ligand-binding receptors and PEDF Induced Signaling. GO annotations related to this gene include chemokine activity. An important paralog of this gene is CCL28.

For Research Use Only

Thank you for your recent purchase.
 If you would like to learn more about antibodies, please visit www.elabscience.com.

**Focus on your research
 Service for life science**

Applications:WB-Western Blot IHC-Immunohistochemistry IF-Immunofluorescence IP-Immunoprecipitation FC-Flow cytometry ChIP-Chromatin Immunoprecipitation Reactivity: H-Human R-Rat M-Mouse Mk-Monkey Dg-Dog Ch-Chicken Hm-Hamster Rb-Rabbit Sh-Sheep Pg-Pig Z-Zebrafish X-Xenopus C-Cow.