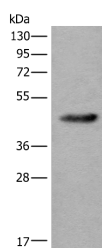


## CDKL4 Polyclonal Antibody

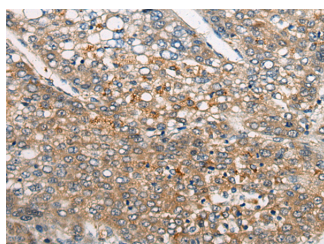
<b>Catalog No.</b>	E-AB-17783	<b>Reactivity</b>	H,M
<b>Storage</b>	Store at -20°C. Avoid freeze / thaw cycles.	<b>Host</b>	Rabbit
<b>Applications</b>	WB,IHC,ELISA	<b>Isotype</b>	IgG

**Note:** Centrifuge before opening to ensure complete recovery of vial contents.

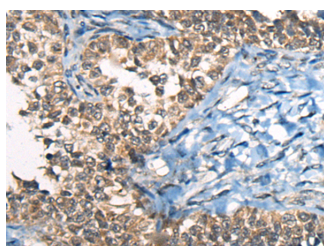
### Images



Western blot analysis of Human heart tissue lysate using CDKL4 Polyclonal Antibody at dilution of 1:550



Immunohistochemistry of paraffin-embedded Human liver cancer tissue using CDKL4 Polyclonal Antibody at dilution of 1:45(×200)



Immunohistochemistry of paraffin-embedded Human ovarian cancer tissue using CDKL4 Polyclonal Antibody at dilution of 1:45(×200)

### Immunogen Information

<b>Immunogen</b>	Synthetic peptide of human CDKL4
<b>Gene Accession</b>	NP001009565
<b>Swissprot</b>	Q5MAI5
<b>Synonyms</b>	CDKL4,CDKL4,Cyclin dependent kinase like 4,Cyclin-dependent kinase-like 4,EC 2.7.11.22,OTTHUMP00000164944

### Product Information

<b>Calculated MW</b>	43 kDa
<b>Observed MW</b>	Refer to figures
<b>Buffer</b>	PBS with 0.05% NaN <sub>3</sub> and 40% Glycerol,pH7.4
<b>Purify</b>	Antigen affinity purification
<b>Dilution</b>	WB 1:500-1:2000, IHC 1:30-1:150, ELISA 1:5000-1:10000

### Background

Cell cycle progression is controlled in part by a family of cyclin proteins and cyclin dependent kinases (Cdks). Cdk proteins work in concert with the cyclins to phosphorylate key substrates involved in each phase of cell cycle progression. Another family of proteins, Cdk inhibitors, also plays a role in regulating the cell cycle by binding to cyclin-Cdk complexes and modulating their activity. Cdks are considered potential targets for anti-cancer therapy due to their involvement with cell cycle regulation. Cdks are also involved in the regulation of transcription and mRNA processing. CdkL4 (cyclin-dependent kinase-like 4) is a 315 amino acid protein that belongs to the CMGC Ser/Thr protein kinase family and may be involved in cell cycle regulation.

#### For Research Use Only

Thank you for your recent purchase.  
 If you would like to learn more about antibodies, please visit [www.elabscience.com](http://www.elabscience.com).

**Focus on your research  
 Service for life science**

Applications:WB-Western Blot IHC-Immunohistochemistry IF-Immunofluorescence IP-Immunoprecipitation FC-Flow cytometry ChIP-Chromatin Immunoprecipitation Reactivity: H-Human R-Rat M-Mouse Mk-Monkey Dg-Dog Ch-Chicken Hm-Hamster Rb-Rabbit Sh-Sheep Pg-Pig Z-Zebrafish X-Xenopus C-Cow.