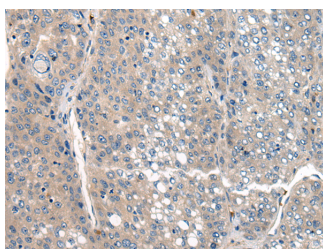


CLTCL1 Polyclonal Antibody

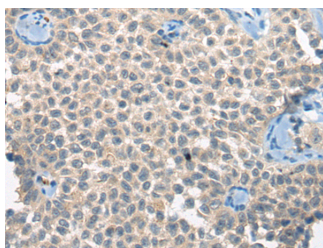
Catalog No.	E-AB-17805	Reactivity	H
Storage	Store at -20°C. Avoid freeze / thaw cycles.	Host	Rabbit
Applications	IHC,ELISA	Isotype	IgG

Note: Centrifuge before opening to ensure complete recovery of vial contents.

Images



Immunohistochemistry of paraffin-embedded Human liver cancer tissue using CLTCL1 Polyclonal Antibody at dilution of 1:60(×200)



Immunohistochemistry of paraffin-embedded Human ovarian cancer tissue using CLTCL1 Polyclonal Antibody at dilution of 1:60(×200)

Immunogen Information

Immunogen	Synthetic peptide of human CLTCL1
Gene Accession	NP009029
Swissprot	P53675
Synonyms	CHC22,Clathrin heavy chain 2,clathrin,heavy chain like 1,CLH 22,CLH22,CLTCL,CLTCL1,CLTD,FLJ36032

Product Information

Buffer	PBS with 0.05% NaN ₃ and 40% Glycerol,pH7.4
Purify	Antigen affinity purification
Dilution	IHC 1:40-1:200, ELISA 1:5000-1:10000

Background

CLTCL1,also named as CLH22,CLTCL and CLTD,belongs to the clathrin heavy chain family. Clathrin is the major protein of the polyhedral coat of coated pits and vesicles. Two different adapter protein complexes link the clathrin lattice either to the plasma membrane or to the trans-Golgi network. The antibody is specific to CLTCL1. It has no cross reaction to CLTC.

For Research Use Only

Thank you for your recent purchase.
 If you would like to learn more about antibodies,please visit www.elabscience.com.

**Focus on your research
 Service for life science**

Applications:WB-Western Blot IHC-Immunohistochemistry IF-Immunofluorescence IP-Immunoprecipitation FC-Flow cytometry ChIP-Chromatin Immunoprecipitation Reactivity: H-Human R-Rat M-Mouse Mk-Monkey Dg-Dog Ch-Chicken Hm-Hamster Rb-Rabbit Sh-Sheep Pg-Pig Z-Zebrafish X-Xenopus C-Cow.