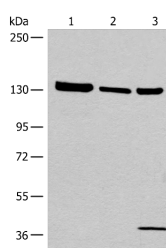


EPHA6 Polyclonal Antibody

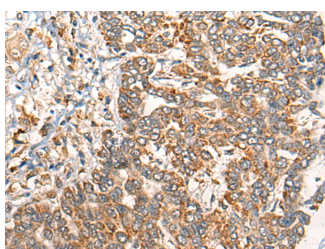
Catalog No.	E-AB-17824	Reactivity	H,M,R
Storage	Store at -20°C. Avoid freeze / thaw cycles.	Host	Rabbit
Applications	WB,IHC,ELISA	Isotype	IgG

Note: Centrifuge before opening to ensure complete recovery of vial contents.

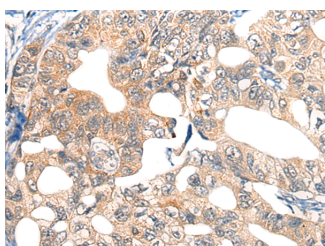
Images



Western blot analysis of 293T cell Human testis tissue lysate A549 cell lysates using EPHA6 Polyclonal Antibody at dilution of 1:800



Immunohistochemistry of paraffin-embedded Human liver cancer tissue using EPHA6 Polyclonal Antibody at dilution of 1:40(x200)



Immunohistochemistry of paraffin-embedded Human gastric cancer tissue using EPHA6 Polyclonal Antibody at dilution of 1:40(x200)

Immunogen Information

Immunogen	Synthetic peptide of human EPHA6
Gene Accession	NP775926
Swissprot	Q9UF33
Synonyms	Ehk 2,EHK-2,Ehk2,EPH homology kinase 2,Eph Receptor A6,Epha6,EPHA6,ephrin receptor EphA6,ephrin type A receptor 6,Ephrin type-A receptor 6,Hek12

Product Information

Calculated MW	116 kDa
Observed MW	Refer to figures
Buffer	PBS with 0.05% NaN3 and 40% Glycerol,pH7.4
Purify	Antigen affinity purification
Dilution	WB 1:500-1:2000, IHC 1:30-1:150, ELISA 1:5000-1:10000

Background

Receptor tyrosine kinase which binds promiscuously GPI-anchored ephrin-A family ligands residing on adjacent cells, leading to contact-dependent bidirectional signaling into neighboring cells. The signaling pathway downstream of the receptor is referred to as forward signaling while the signaling pathway downstream of the ephrin ligand is referred to as reverse signaling.

For Research Use Only

Thank you for your recent purchase.
 If you would like to learn more about antibodies, please visit www.elabscience.com.

**Focus on your research
 Service for life science**

Applications:WB-Western Blot IHC-Immunohistochemistry IF-Immunofluorescence IP-Immunoprecipitation FC-Flow cytometry ChIP-Chromatin Immunoprecipitation Reactivity: H-Human R-Rat M-Mouse Mk-Monkey Dg-Dog Ch-Chicken Hm-Hamster Rb-Rabbit Sh-Sheep Pg-Pig Z-Zebrafish X-Xenopus C-Cow.