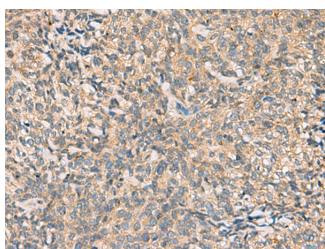


CMTM4 Polyclonal Antibody

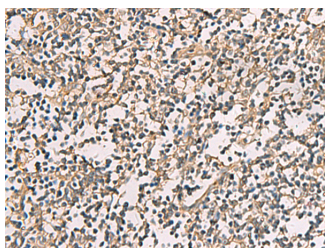
Catalog No.	E-AB-17832	Reactivity	H,M
Storage	Store at -20°C. Avoid freeze / thaw cycles.	Host	Rabbit
Applications	IHC,ELISA	Isotype	IgG

Note: Centrifuge before opening to ensure complete recovery of vial contents.

Images



Immunohistochemistry of paraffin-embedded Human cervical cancer tissue using CMTM4 Polyclonal Antibody at dilution of 1:55(×200)



Immunohistochemistry of paraffin-embedded Human tonsil tissue using CMTM4 Polyclonal Antibody at dilution of 1:55(×200)

Immunogen Information

Immunogen	Synthetic peptide of human CMTM4
Gene Accession	NP848933
Swissprot	Q8IZR5
Synonyms	CKLF-like MARVEL transmembrane domain containing 4,CKLF4,CKLFSF4,CMTM4

Product Information

Buffer	PBS with 0.05% NaN ₃ and 40% Glycerol,pH7.4
Purify	Antigen affinity purification
Dilution	IHC 1:50-1:200, ELISA 1:5000-1:10000

Background

This gene belongs to the chemokine-like factor gene superfamily, a novel family that is similar to the chemokine and the transmembrane 4 superfamilies of signaling molecules. This gene is one of several chemokine-like factor genes located in a cluster on chromosome 16. Alternatively spliced transcript variants encoding different isoforms have been identified. CMTM4 (CKLF Like MARVEL Transmembrane Domain Containing 4) is a Protein Coding gene. GO annotations related to this gene include cytokine activity. An important paralog of this gene is CMTM6.

For Research Use Only

Thank you for your recent purchase.
 If you would like to learn more about antibodies, please visit www.elabscience.com.

**Focus on your research
 Service for life science**

Applications:WB-Western Blot IHC-Immunohistochemistry IF-Immunofluorescence IP-Immunoprecipitation FC-Flow cytometry ChIP-Chromatin Immunoprecipitation Reactivity: H-Human R-Rat M-Mouse Mk-Monkey Dg-Dog Ch-Chicken Hm-Hamster Rb-Rabbit Sh-Sheep Pg-Pig Z-Zebrafish X-Xenopus C-Cow.