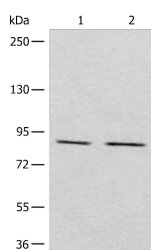


MARK2 Polyclonal Antibody

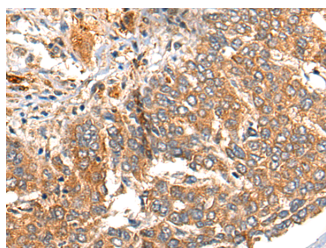
Catalog No.	E-AB-17851	Reactivity	H,M,R
Storage	Store at -20°C. Avoid freeze / thaw cycles.	Host	Rabbit
Applications	WB,IHC,ELISA	Isotype	IgG

Note: Centrifuge before opening to ensure complete recovery of vial contents.

Images



Western blot analysis of Raji and A431 cell lysates using MARK2 Polyclonal Antibody at dilution of 1:800



Immunohistochemistry of paraffin-embedded Human liver cancer tissue using MARK2 Polyclonal Antibody at dilution of 1:35(×200)

Immunogen Information

Immunogen	Synthetic peptide of human MARK2
Gene Accession	NP001034558
Swissprot	Q7KZI7
Synonyms	ELKL motif kinase 1,ELKL motif kinase,EMK-1,EMK1,Mark2,MARK2,MGC99619,PAR 1,Par 1b

Product Information

Calculated MW	88 kDa
Observed MW	Refer to figures
Buffer	PBS with 0.05% NaN ₃ and 40% Glycerol,pH7.4
Purify	Antigen affinity purification
Dilution	WB 1:500-1:2000, IHC 1:25-1:100, ELISA 1:5000-1:10000

Background

This gene encodes a member of the Par-1 family of serine/threonine protein kinases. The protein is an important regulator of cell polarity in epithelial and neuronal cells, and also controls the stability of microtubules through phosphorylation and inactivation of several microtubule-associating proteins. The protein localizes to cell membranes. Multiple transcript variants encoding different isoforms have been found for this gene.

For Research Use Only

Thank you for your recent purchase.
 If you would like to learn more about antibodies, please visit www.elabscience.com.

**Focus on your research
 Service for life science**

Applications:WB-Western Blot IHC-Immunohistochemistry IF-Immunofluorescence IP-Immunoprecipitation FC-Flow cytometry ChIP-Chromatin Immunoprecipitation Reactivity: H-Human R-Rat M-Mouse Mk-Monkey Dg-Dog Ch-Chicken Hm-Hamster Rb-Rabbit Sh-Sheep Pg-Pig Z-Zebrafish X-Xenopus C-Cow.