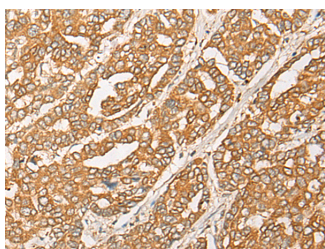


GNB1L Polyclonal Antibody

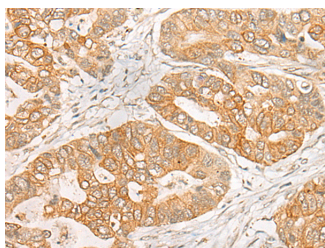
Catalog No.	E-AB-17869	Reactivity	H,M
Storage	Store at -20°C. Avoid freeze / thaw cycles.	Host	Rabbit
Applications	IHC,ELISA	Isotype	IgG

Note: Centrifuge before opening to ensure complete recovery of vial contents.

Images



Immunohistochemistry of paraffin-embedded Human liver cancer tissue using GNB1L Polyclonal Antibody at dilution of 1:35(×200)



Immunohistochemistry of paraffin-embedded Human gastric cancer tissue using GNB1L Polyclonal Antibody at dilution of 1:35(×200)

Immunogen Information

Immunogen	Synthetic peptide of human GNB1L
Gene Accession	NP443730
Swissprot	Q9BYB4
Synonyms	DGCRK3,ESTM55,fb98e06,fj09d12,FKSG1,GNB1L,GNB1L,GY2,KIAA1645,WDR14,WDVCF

Product Information

Buffer	PBS with 0.05% NaN ₃ and 40% Glycerol,pH7.4
Purify	Antigen affinity purification
Dilution	IHC 1:30-1:150, ELISA 1:5000-1:10000

Background

This gene encodes a G-protein beta-subunit-like polypeptide which is a member of the WD repeat protein family. WD repeats are minimally conserved regions of approximately 40 amino acids typically bracketed by gly-his and trp-asp (GH-WD), which may facilitate formation of heterotrimeric or multiprotein complexes. Members of this family are involved in a variety of cellular processes, including cell cycle progression, signal transduction, apoptosis, and gene regulation. This protein contains 6 WD repeats and is highly expressed in the heart. The gene maps to the region on chromosome 22q11, which is deleted in DiGeorge syndrome, trisomic in derivative 22 syndrome and tetrasomic in cat-eye syndrome. Therefore, this gene may contribute to the etiology of those disorders. Transcripts from this gene share exons with some transcripts from the C22orf29 gene.

For Research Use Only

Thank you for your recent purchase.
 If you would like to learn more about antibodies, please visit www.elabscience.com.

**Focus on your research
 Service for life science**

Applications:WB-Western Blot IHC-Immunohistochemistry IF-Immunofluorescence IP-Immunoprecipitation FC-Flow cytometry ChIP-Chromatin Immunoprecipitation Reactivity: H-Human R-Rat M-Mouse Mk-Monkey Dg-Dog Ch-Chicken Hm-Hamster Rb-Rabbit Sh-Sheep Pg-Pig Z-Zebrafish X-Xenopus C-Cow.