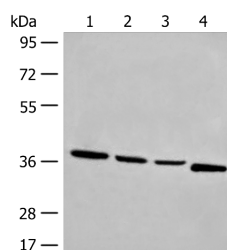


OTUD6A Polyclonal Antibody

Catalog No.	E-AB-17894	Reactivity	H,M
Storage	Store at -20°C. Avoid freeze / thaw cycles.	Host	Rabbit
Applications	WB,ELISA	Isotype	IgG

Note: Centrifuge before opening to ensure complete recovery of vial contents.

Images



Western blot analysis of Human breast cancer tissue TM4 231 and Jurkat cell lysates using OTUD6A Polyclonal Antibody at dilution of 1:550

Immunogen Information

Immunogen	Synthetic peptide of human OTUD6A
Gene Accession	NP997203
Swissprot	Q7L8S5
Synonyms	DUBA 2,DUBA-2,FLJ25831,HIN 6 protease,HSHIN6,OTU domain containing 6A,OTU domain containing protein 6A,OTU domain-containing protein 6A,OTU6A,OTUD6A

Product Information

Calculated MW	33 kDa
Observed MW	Refer to figures
Buffer	PBS with 0.05% NaN ₃ and 40% Glycerol,pH7.4
Purify	Antigen affinity purification
Dilution	WB 1:500-1:2000, ELISA 1:5000-1:10000

Background

Deubiquitinating enzymes (DUBs; see MIM 603478) are proteases that specifically cleave ubiquitin (MIM 191339) linkages, negating the action of ubiquitin ligases. DUBA2 belongs to a DUB subfamily characterized by an ovarian tumor (OTU) domain.

For Research Use Only

Thank you for your recent purchase.

If you would like to learn more about antibodies, please visit www.elabscience.com.

**Focus on your research
 Service for life science**

Applications:WB-Western Blot IHC-Immunohistochemistry IF-Immunofluorescence IP-Immunoprecipitation FC-Flow cytometry ChIP-Chromatin Immunoprecipitation Reactivity: H-Human R-Rat M-Mouse Mk-Monkey Dg-Dog Ch-Chicken Hm-Hamster Rb-Rabbit Sh-Sheep Pg-Pig Z-Zebrafish X-Xenopus C-Cow.