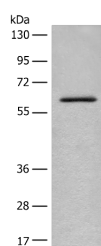


## ENO4 Polyclonal Antibody

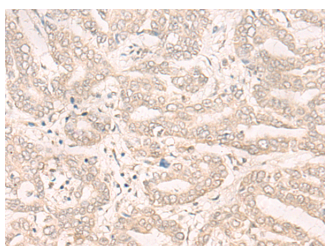
<b>Catalog No.</b>	E-AB-17910	<b>Reactivity</b>	H,M
<b>Storage</b>	Store at -20°C. Avoid freeze / thaw cycles.	<b>Host</b>	Rabbit
<b>Applications</b>	WB,IHC,ELISA	<b>Isotype</b>	IgG

**Note:** Centrifuge before opening to ensure complete recovery of vial contents.

### Images



Western blot analysis of Mouse lung tissue lysate using ENO4 Polyclonal Antibody at dilution of 1:450



Immunohistochemistry of paraffin-embedded Human liver cancer tissue using ENO4 Polyclonal Antibody at dilution of 1:30(x200)

### Immunogen Information

<b>Immunogen</b>	Synthetic peptide of human ENO4
<b>Gene Accession</b>	NP001229628
<b>Swissprot</b>	A6NNW6
<b>Synonyms</b>	C10orf134,AC023283.3,eno4,ENO4,Enolase 4,Enolase family member 4,Enolase-like protein ENO4

### Product Information

<b>Calculated MW</b>	69 kDa
<b>Observed MW</b>	Refer to figures
<b>Buffer</b>	PBS with 0.05% NaN3 and 40% Glycerol,pH7.4
<b>Purify</b>	Antigen affinity purification
<b>Dilution</b>	WB 1:500-1:2000, IHC 1:30-1:150, ELISA 1:5000-1:10000

### Background

May be required for sperm motility and function.

#### For Research Use Only

Thank you for your recent purchase.  
 If you would like to learn more about antibodies, please visit [www.elabscience.com](http://www.elabscience.com).

**Focus on your research  
 Service for life science**

Applications:WB-Western Blot IHC-Immunohistochemistry IF-Immunofluorescence IP-Immunoprecipitation FC-Flow cytometry ChIP-Chromatin Immunoprecipitation Reactivity: H-Human R-Rat M-Mouse Mk-Monkey Dg-Dog Ch-Chicken Hm-Hamster Rb-Rabbit Sh-Sheep Pg-Pig Z-Zebrafish X-Xenopus C-Cow.