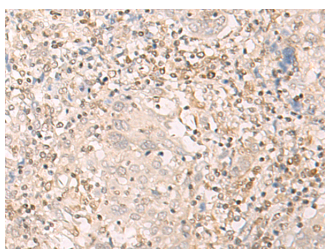


## EPSTI1 Polyclonal Antibody

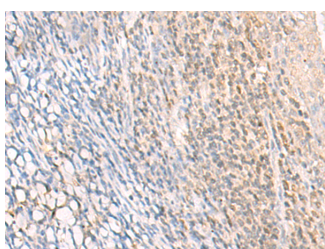
<b>Catalog No.</b>	E-AB-17911	<b>Reactivity</b>	H
<b>Storage</b>	Store at -20°C. Avoid freeze / thaw cycles.	<b>Host</b>	Rabbit
<b>Applications</b>	IHC,ELISA	<b>Isotype</b>	IgG

**Note:** Centrifuge before opening to ensure complete recovery of vial contents.

### Images



Immunohistochemistry of paraffin-embedded Human cervical cancer tissue using EPSTI1 Polyclonal Antibody at dilution of 1:25(×200)



Immunohistochemistry of paraffin-embedded Human tonsil tissue using EPSTI1 Polyclonal Antibody at dilution of 1:25(×200)

### Immunogen Information

<b>Immunogen</b>	Synthetic peptide of human EPSTI1
<b>Gene Accession</b>	NP001002264
<b>Swissprot</b>	Q96J88
<b>Synonyms</b>	BRESI1, Epithelial-stromal interaction protein 1, EPSTI 1, Epsti1, ESIP1, MGC29634

### Product Information

<b>Buffer</b>	PBS with 0.05% NaN3 and 40% Glycerol, pH7.4
<b>Purify</b>	Antigen affinity purification
<b>Dilution</b>	IHC 1:30-1:150, ELISA 1:5000-1:10000

### Background

EPSTI1 (Epithelial-stromal interaction protein 1), also known as BRESI1, is a 318 amino acid protein that is highly expressed in spleen, placenta, small intestine, liver, kidney, thymus, testis and salivary gland. Existing as three isoforms that are formed due to alternative splicing events, EPSTI1 is weakly expressed in normal breast tissue, but is heavily up-regulated in breast carcinoma, suggesting an important role for EPSTI1 in tumor formation and/or progression. Additionally, EPSTI1 is found in blood cells from systemic lupus erythematosus (SLE)-afflicted patients, implicating EPSTI1 as a potential protein involved in SLE.

#### For Research Use Only

Thank you for your recent purchase.  
 If you would like to learn more about antibodies, please visit [www.elabscience.com](http://www.elabscience.com).

**Focus on your research  
 Service for life science**

Applications: WB-Western Blot IHC-Immunohistochemistry IF-Immunofluorescence IP-Immunoprecipitation FC-Flow cytometry ChIP-Chromatin Immunoprecipitation Reactivity: H-Human R-Rat M-Mouse Mk-Monkey Dg-Dog Ch-Chicken Hm-Hamster Rb-Rabbit Sh-Sheep Pg-Pig Z-Zebrafish X-Xenopus C-Cow.