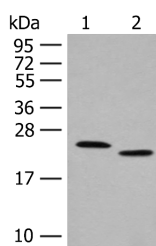


FAM213A Polyclonal Antibody

Catalog No.	E-AB-17932	Reactivity	H,M,R
Storage	Store at -20°C. Avoid freeze / thaw cycles.	Host	Rabbit
Applications	WB,ELISA	Isotype	IgG

Note: Centrifuge before opening to ensure complete recovery of vial contents.

Images



Western blot analysis of Human fat tissue and A375 cell lysates using FAM213A Polyclonal Antibody at dilution of 1:400

Immunogen Information

Immunogen	Synthetic peptide of human FAM213A
Gene Accession	NP115709
Swissprot	Q9BRX8
Synonyms	C10orf58,CJ058,UPF0765 protein C10orf58

Product Information

Calculated MW	26 kDa
Observed MW	Refer to figures
Buffer	PBS with 0.05% NaN ₃ and 40% Glycerol,pH7.4
Purify	Antigen affinity purification
Dilution	WB 1:500-1:2000, ELISA 1:5000-1:10000

Background

Involved in redox regulation of the cell. Acts as an antioxidant. Inhibits TNFSF11-induced NFKB1 and JUN activation and osteoclast differentiation. May affect bone resorption and help to maintain bone mass. Acts as a negative regulator of macrophage-mediated inflammation by inhibiting macrophage production of inflammatory cytokines, probably through suppression of the MAPK signaling pathway.

For Research Use Only

Thank you for your recent purchase.

If you would like to learn more about antibodies, please visit www.elabscience.com.

**Focus on your research
 Service for life science**

Applications:WB-Western Blot IHC-Immunohistochemistry IF-Immunofluorescence IP-Immunoprecipitation FC-Flow cytometry ChIP-Chromatin Immunoprecipitation Reactivity: H-Human R-Rat M-Mouse Mk-Monkey Dg-Dog Ch-Chicken Hm-Hamster Rb-Rabbit Sh-Sheep Pg-Pig Z-Zebrafish X-Xenopus C-Cow.