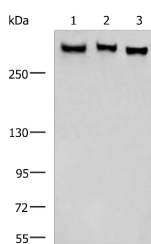


FLNC Polyclonal Antibody

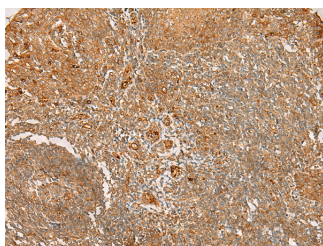
Catalog No.	E-AB-17971	Reactivity	H,M,R
Storage	Store at -20°C. Avoid freeze / thaw cycles.	Host	Rabbit
Applications	WB,IHC,ELISA	Isotype	IgG

Note: Centrifuge before opening to ensure complete recovery of vial contents.

Images



Western blot analysis of LO2 NIH/3T3 A172 cell lysates using FLNC Polyclonal Antibody at dilution of 1:750



Immunohistochemistry of paraffin-embedded Human tonsil tissue using FLNC Polyclonal Antibody at dilution of 1:30(x200)

Immunogen Information

Immunogen	Synthetic peptide of human FLNC
Gene Accession	NP001449
Swissprot	Q14315
Synonyms	ABPL,Actin binding like protein,Filamin 2,Filamin C,FLN2,Gamma filamin

Product Information

Calculated MW	291 kDa
Observed MW	Refer to figures
Buffer	PBS with 0.05% NaN ₃ and 40% Glycerol,pH7.4
Purify	Antigen affinity purification
Dilution	WB 1:500-1:2000, IHC 1:30-1:150, ELISA 1:5000-1:10000

Background

This gene encodes one of three related filamin genes, specifically gamma filamin. These filamin proteins crosslink actin filaments into orthogonal networks in cortical cytoplasm and participate in the anchoring of membrane proteins for the actin cytoskeleton. Three functional domains exist in filamin: an N-terminal filamentous actin-binding domain, a C-terminal self-association domain, and a membrane glycoprotein-binding domain. Two transcript variants encoding different isoforms have been found for this gene.

For Research Use Only

Thank you for your recent purchase.
 If you would like to learn more about antibodies, please visit www.elabscience.com.

**Focus on your research
 Service for life science**

Applications:WB-Western Blot IHC-Immunohistochemistry IF-Immunofluorescence IP-Immunoprecipitation FC-Flow cytometry ChIP-Chromatin Immunoprecipitation Reactivity: H-Human R-Rat M-Mouse Mk-Monkey Dg-Dog Ch-Chicken Hm-Hamster Rb-Rabbit Sh-Sheep Pg-Pig Z-Zebrafish X-Xenopus C-Cow.