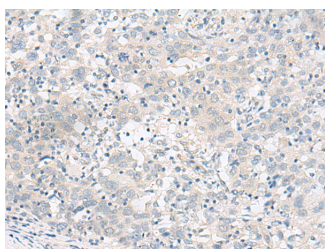


## RALGAPA1 Polyclonal Antibody

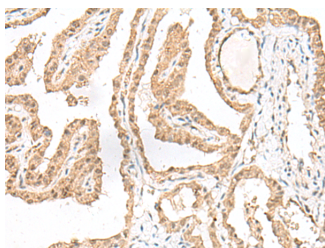
<b>Catalog No.</b>	E-AB-17987	<b>Reactivity</b>	H,M,R
<b>Storage</b>	Store at -20°C. Avoid freeze / thaw cycles.	<b>Host</b>	Rabbit
<b>Applications</b>	IHC,ELISA	<b>Isotype</b>	IgG

**Note:** Centrifuge before opening to ensure complete recovery of vial contents.

### Images



Immunohistochemistry of paraffin-embedded Human cervical cancer tissue using RALGAPA1 Polyclonal Antibody at dilution of 1:55(×200)



Immunohistochemistry of paraffin-embedded Human thyroid cancer tissue using RALGAPA1 Polyclonal Antibody at dilution of 1:55(×200)

### Immunogen Information

<b>Immunogen</b>	Synthetic peptide of human RALGAPA1
<b>Gene Accession</b>	NP055805
<b>Swissprot</b>	Q6GYQ0
<b>Synonyms</b>	DKFZp566D133,DKFZp667F074,GARN L1,GARNL 1,GRIFE,KIAA0884,p240,TULIP 1,TULIP1

### Product Information

<b>Buffer</b>	PBS with 0.05% NaN <sub>3</sub> and 40% Glycerol,pH7.4
<b>Purify</b>	Antigen affinity purification
<b>Dilution</b>	IHC 1:40-1:200, ELISA 1:5000-1:10000

### Background

This gene encodes a major subunit of the RAL-GTPase activating protein. A similar protein in mouse binds E12, a transcriptional regulator of immunoglobulin genes. The mouse protein also functions in skeletal muscle by binding to the regulatory 14-3-3 proteins upon stimulation with insulin or muscle contraction. A pseudogene of this gene has been identified on chromosome 9.

#### For Research Use Only

Thank you for your recent purchase.  
 If you would like to learn more about antibodies, please visit [www.elabscience.com](http://www.elabscience.com).

**Focus on your research  
 Service for life science**

Applications:WB-Western Blot IHC-Immunohistochemistry IF-Immunofluorescence IP-Immunoprecipitation FC-Flow cytometry ChIP-Chromatin Immunoprecipitation Reactivity: H-Human R-Rat M-Mouse Mk-Monkey Dg-Dog Ch-Chicken Hm-Hamster Rb-Rabbit Sh-Sheep Pg-Pig Z-Zebrafish X-Xenopus C-Cow.