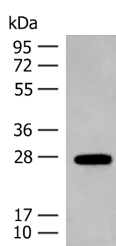


GUCA1B Polyclonal Antibody

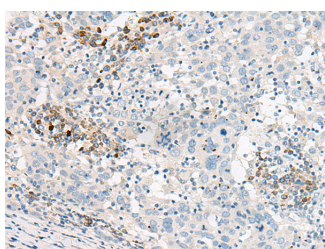
Catalog No.	E-AB-17991	Reactivity	H,M
Storage	Store at -20°C. Avoid freeze / thaw cycles.	Host	Rabbit
Applications	WB,IHC,ELISA	Isotype	IgG

Note: Centrifuge before opening to ensure complete recovery of vial contents.

Images



Western blot analysis of Mouse eye tissue lysate using GUCA1B Polyclonal Antibody at dilution of 1:500



Immunohistochemistry of paraffin-embedded Human cervical cancer tissue using GUCA1B Polyclonal Antibody at dilution of 1:45(x200)

Immunogen Information

Immunogen	Synthetic peptide of human GUCA1B
Gene Accession	NP002089
Swissprot	Q9UMX6
Synonyms	GCAP 2,Guanylin 2,Guanylyl cyclase-activating protein 2,GUC1B,GUCA 2,Guca1b

Product Information

Calculated MW	23 kDa
Observed MW	Refer to figures
Buffer	PBS with 0.05% NaN ₃ and 40% Glycerol,pH7.4
Purify	Antigen affinity purification
Dilution	WB 1:500-1:2000, IHC 1:30-1:150, ELISA 1:5000-1:10000

Background

The protein encoded by this gene is a calcium-binding protein that activates photoreceptor guanylate cyclases. This gene may have arisen due to a gene duplication event since there is a highly similar gene clustered with it on chromosome 6. Mutations in this gene can cause a form of retinitis pigmentosa.

For Research Use Only

Thank you for your recent purchase.
 If you would like to learn more about antibodies, please visit www.elabscience.com.

**Focus on your research
 Service for life science**

Applications:WB-Western Blot IHC-Immunohistochemistry IF-Immunofluorescence IP-Immunoprecipitation FC-Flow cytometry ChIP-Chromatin Immunoprecipitation Reactivity: H-Human R-Rat M-Mouse Mk-Monkey Dg-Dog Ch-Chicken Hm-Hamster Rb-Rabbit Sh-Sheep Pg-Pig Z-Zebrafish X-Xenopus C-Cow.