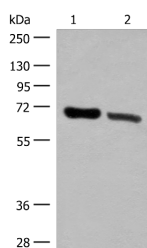


## TRIM8 Polyclonal Antibody

|                     |   |                   |        |
|---------------------|---|-------------------|--------|
| <b>Catalog No.</b>  | E-AB-17996                                  | <b>Reactivity</b> | H,M    |
| <b>Storage</b>      | Store at -20°C. Avoid freeze / thaw cycles. | <b>Host</b>       | Rabbit |
| <b>Applications</b> | WB,ELISA                                    | <b>Isotype</b>    | IgG    |

**Note:** Centrifuge before opening to ensure complete recovery of vial contents.

### Images



Western blot analysis of Human placenta tissue and Human fetal brain tissue lysates using TRIM8 Polyclonal Antibody at dilution of 1:500

### Immunogen Information

|                       |   |
|-----------------------|---|
| <b>Immunogen</b>      | Synthetic peptide of human TRIM8  |
| <b>Gene Accession</b> | NP112174  |
| <b>Swissprot</b>      | Q9BZR9  |
| <b>Synonyms</b>       | RING finger protein<br>27,RNF27,RP11-47A8.4,TRIM8,TRIM8,Tripartite motif containing 8 |

### Product Information

|                      |  |
|----------------------|--|
| <b>Calculated MW</b> | 61 kDa   |
| <b>Observed MW</b>   | Refer to figures                                       |
| <b>Buffer</b>        | PBS with 0.05% NaN <sub>3</sub> and 40% Glycerol,pH7.4 |
| <b>Purify</b>        | Antigen affinity purification                          |
| <b>Dilution</b>      | WB 1:500-1:2000, ELISA 1:5000-1:10000                  |

### Background

This gene encodes a member of the tripartite motif (TRIM) protein family. Based on similarities to other proteins, the encoded protein is suspected to be an E3 ubiquitin-protein ligase. Regulation of this gene may be altered in some cancers. Mutations resulting in a truncated protein product have been observed in early-onset epileptic encephalopathy (EOEE).

#### For Research Use Only

Thank you for your recent purchase.  
 If you would like to learn more about antibodies, please visit [www.elabscience.com](http://www.elabscience.com).

**Focus on your research  
 Service for life science**

Applications:WB-Western Blot IHC-Immunohistochemistry IF-Immunofluorescence IP-Immunoprecipitation FC-Flow cytometry ChIP-Chromatin Immunoprecipitation Reactivity: H-Human R-Rat M-Mouse Mk-Monkey Dg-Dog Ch-Chicken Hm-Hamster Rb-Rabbit Sh-Sheep Pg-Pig Z-Zebrafish X-Xenopus C-Cow.