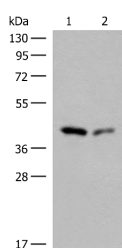


GIPC1 Polyclonal Antibody

Catalog No.	E-AB-18000	Reactivity	H,M,R
Storage	Store at -20°C. Avoid freeze / thaw cycles.	Host	Rabbit
Applications	WB,ELISA	Isotype	IgG

Note: Centrifuge before opening to ensure complete recovery of vial contents.

Images



Western blot analysis of HeLa and HEPG2 cell lysates using GIPC1 Polyclonal Antibody at dilution of 1:400

Immunogen Information

Immunogen	Synthetic peptide of human GIPC1
Gene Accession	NP005707
Swissprot	O14908
Synonyms	C19ORF3,GIPC,IIP 1,IIP1,NIP,RGS19IP1,SEMCAP,SYNECTIN,Tax interaction protein 2,TIP 2

Product Information

Calculated MW	36 kDa
Observed MW	Refer to figures
Buffer	PBS with 0.05% NaN ₃ and 40% Glycerol,pH7.4
Purify	Antigen affinity purification
Dilution	WB 1:500-1:2000, ELISA 1:5000-1:10000

Background

GIPC1 is a scaffolding protein that regulates cell surface receptor expression and trafficking.

For Research Use Only

Thank you for your recent purchase.

If you would like to learn more about antibodies, please visit www.elabscience.com.

**Focus on your research
 Service for life science**

Applications:WB-Western Blot IHC-Immunohistochemistry IF-Immunofluorescence IP-Immunoprecipitation FC-Flow cytometry ChIP-
 Chromatin Immunoprecipitation Reactivity: H-Human R-Rat M-Mouse Mk-Monkey Dg-Dog Ch-Chicken Hm-Hamster Rb-Rabbit Sh-
 Sheep Pg-Pig Z-Zebrafish X-Xenopus C-Cow.