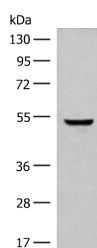


## GLCCI1 Polyclonal Antibody

<b>Catalog No.</b>	E-AB-18001	<b>Reactivity</b>	H,M
<b>Storage</b>	Store at -20°C. Avoid freeze / thaw cycles.	<b>Host</b>	Rabbit
<b>Applications</b>	WB,ELISA	<b>Isotype</b>	IgG

**Note:** Centrifuge before opening to ensure complete recovery of vial contents.

### Images



Western blot analysis of Human cerebella tissue lysate using GLCCI1 Polyclonal Antibody at dilution of 1:400

### Immunogen Information

<b>Immunogen</b>	Synthetic peptide of human GLCCI1
<b>Gene Accession</b>	NP612435
<b>Swissprot</b>	Q86VQ1
<b>Synonyms</b>	FAM117C,GCTR,GIG18,GLCCI1,GLCI1,Glucocorticoid induced transcript 1,Glucocorticoid-induced transcript 1 protein,TSSN1

### Product Information

<b>Calculated MW</b>	58 kDa
<b>Observed MW</b>	Refer to figures
<b>Buffer</b>	PBS with 0.05% NaN <sub>3</sub> and 40% Glycerol,pH7.4
<b>Purify</b>	Antigen affinity purification
<b>Dilution</b>	WB 1:500-1:2000, ELISA 1:5000-1:10000

### Background

This gene encodes a protein of unknown function. Expression of this gene is induced by glucocorticoids and may be an early marker for glucocorticoid-induced apoptosis. Single nucleotide polymorphisms in this gene are associated with a decreased response to inhaled glucocorticoids in asthmatic patients.

#### For Research Use Only

Thank you for your recent purchase.

If you would like to learn more about antibodies, please visit [www.elabscience.com](http://www.elabscience.com).

**Focus on your research  
 Service for life science**

Applications:WB-Western Blot IHC-Immunohistochemistry IF-Immunofluorescence IP-Immunoprecipitation FC-Flow cytometry ChIP-Chromatin Immunoprecipitation Reactivity: H-Human R-Rat M-Mouse Mk-Monkey Dg-Dog Ch-Chicken Hm-Hamster Rb-Rabbit Sh-Sheep Pg-Pig Z-Zebrafish X-Xenopus C-Cow.