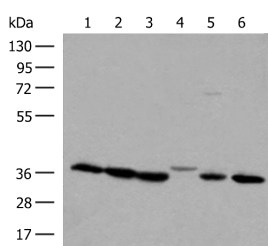


LDHA Polyclonal Antibody

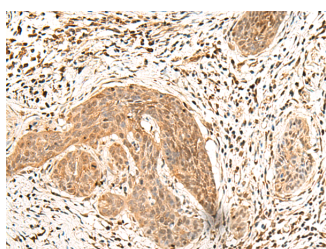
| | | | |
|---------------------|---|-------------------|--------|
| Catalog No. | E-AB-18030 | Reactivity | H,M,R |
| Storage | Store at -20°C. Avoid freeze / thaw cycles. | Host | Rabbit |
| Applications | WB,IHC,ELISA | Isotype | IgG |

Note: Centrifuge before opening to ensure complete recovery of vial contents.

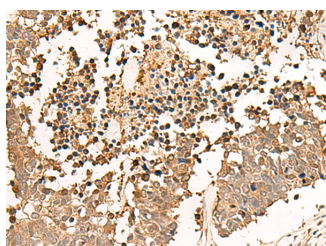
Images



Western blot analysis of 293T and A375 cell lysates using LDHA Polyclonal Antibody at dilution of 1:250



Immunohistochemistry of paraffin-embedded Human esophagus cancer tissue using LDHA Polyclonal Antibody at dilution of 1:25(×200)



Immunohistochemistry of paraffin-embedded Human lung cancer tissue using LDHA Polyclonal Antibody at dilution of 1:25(×200)

Immunogen Information

| | |
|-----------------------|--|
| Immunogen | Synthetic peptide of human LDHA |
| Gene Accession | NP005557 |
| Swissprot | P00338 |
| Synonyms | LDH A,LDH M,LDH muscle subunit,LDH1,LDH5,LDHA,PIG 19,PIG19,Renal carcinoma antigen NY-REN-59 |

Product Information

| | |
|----------------------|--|
| Calculated MW | 37 kDa |
| Observed MW | Refer to figures |
| Buffer | PBS with 0.05% NaN ₃ and 40% Glycerol,pH7.4 |
| Purify | Antigen affinity purification |
| Dilution | WB 1:500-1:2000, IHC 1:30-1:150, ELISA 1:5000-1:10000 |

Background

LDHA,also named as LDH-M and NY-REN-59,is an enzyme which catalyzes the inter-conversion of pyruvate and L-lactate with concomitant inter-conversion of NADH and NAD⁺. LDHA is found in most somatic tissues,though predominantly in muscle tissue and tumours,and belongs to the lactate dehydrogenase family. It has long been known that many human cancers have higher LDHA levels compared to normal tissues. It has also been shown that LDHA plays an important role in the development,invasion and metastasis of malignancies. Mutations in LDHA have been linked to exertional myoglobinuria. LDHA has some isoforms with MW 26-40 kDa.

For Research Use Only

Thank you for your recent purchase.
 If you would like to learn more about antibodies,please visit www.elabscience.com.

Focus on your research
Service for life science

Applications:WB-Western Blot IHC-Immunohistochemistry IF-Immunofluorescence IP-Immunoprecipitation FC-Flow cytometry ChIP-Chromatin Immunoprecipitation Reactivity: H-Human R-Rat M-Mouse Mk-Monkey Dg-Dog Ch-Chicken Hm-Hamster Rb-Rabbit Sh-Sheep Pg-Pig Z-Zebrafish X-Xenopus C-Cow.