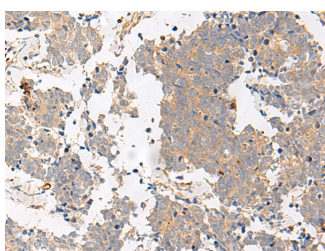


GPR153 Polyclonal Antibody

Catalog No.	E-AB-18038	Reactivity	H
Storage	Store at -20°C. Avoid freeze / thaw cycles.	Host	Rabbit
Applications	IHC,ELISA	Isotype	IgG

Note: Centrifuge before opening to ensure complete recovery of vial contents.

Images



Immunohistochemistry of paraffin-embedded Human lung cancer tissue using GPR153 Polyclonal Antibody at dilution of 1:40(×200)

Immunogen Information

Immunogen	Synthetic peptide of human GPR153
Gene Accession	NP997253
Swissprot	Q6NV75
Synonyms	GP153,Gpr153,PGR1,Probable G-protein coupled receptor 153

Product Information

Buffer	PBS with 0.05% NaN ₃ and 40% Glycerol,pH7.4
Purify	Antigen affinity purification
Dilution	IHC 1:30-1:150, ELISA 1:5000-1:10000

Background

This gene encodes an integral membrane protein that belongs to the Class A rhodopsin superfamily of G protein coupled receptors. The encoded protein is expressed primarily in the central nervous system. A knockdown of the orthologous gene in rat is associated with a significant reduction in food intake and impaired decision making ability. Mutations in this gene are associated with schizophrenia, autism, and other neuropsychiatric disorders. The expression of this gene is activated by the glioma-associated oncogene homolog 1 transcription factor which, in turn, is activated by sonic hedgehog in normal and tumorigenic cells.

For Research Use Only

Thank you for your recent purchase.
 If you would like to learn more about antibodies, please visit www.elabscience.com.

**Focus on your research
 Service for life science**

Applications:WB-Western Blot IHC-Immunohistochemistry IF-Immunofluorescence IP-Immunoprecipitation FC-Flow cytometry ChIP-Chromatin Immunoprecipitation Reactivity: H-Human R-Rat M-Mouse Mk-Monkey Dg-Dog Ch-Chicken Hm-Hamster Rb-Rabbit Sh-Sheep Pg-Pig Z-Zebrafish X-Xenopus C-Cow.