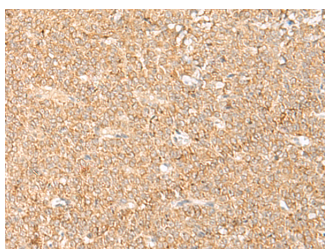


LGALSL Polyclonal Antibody

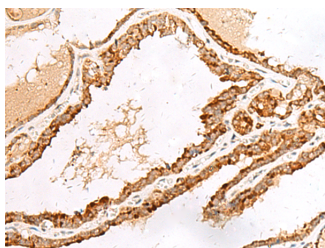
| | | | |
|---------------------|---|-------------------|--------|
| Catalog No. | E-AB-18059 | Reactivity | H,M |
| Storage | Store at -20°C. Avoid freeze / thaw cycles. | Host | Rabbit |
| Applications | IHC,ELISA | Isotype | IgG |

Note: Centrifuge before opening to ensure complete recovery of vial contents.

Images



Immunohistochemistry of paraffin-embedded Human ovarian cancer tissue using LGALSL Polyclonal Antibody at dilution of 1:70(×200)



Immunohistochemistry of paraffin-embedded Human thyroid cancer tissue using LGALSL Polyclonal Antibody at dilution of 1:70(×200)

Immunogen Information

| | |
|-----------------------|--|
| Immunogen | Synthetic peptide of human LGALSL |
| Gene Accession | NP054900 |
| Swissprot | Q3ZCW2 |
| Synonyms | Galectin-related protein,GRP,HSPC159,lectin, galacto side-binding-like,LEGL,LGALSL,MGC188016,MGC 33751,MGC71953,RGD1307414 |

Product Information

| | |
|-----------------|--|
| Buffer | PBS with 0.05% NaN ₃ and 40% Glycerol,pH7.4 |
| Purify | Antigen affinity purification |
| Dilution | IHC 1:50-1:300, ELISA 1:5000-1:10000 |

Background

Does not bind lactose, and may not bind carbohydrates.

For Research Use Only

Thank you for your recent purchase.
 If you would like to learn more about antibodies,please visit www.elabscience.com.

**Focus on your research
 Service for life science**

Applications:WB-Western Blot IHC-Immunohistochemistry IF-Immunofluorescence IP-Immunoprecipitation FC-Flow cytometry ChIP-Chromatin Immunoprecipitation Reactivity: H-Human R-Rat M-Mouse Mk-Monkey Dg-Dog Ch-Chicken Hm-Hamster Rb-Rabbit Sh-Sheep Pg-Pig Z-Zebrafish X-Xenopus C-Cow.