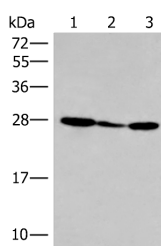


HLA-DOB Polyclonal Antibody

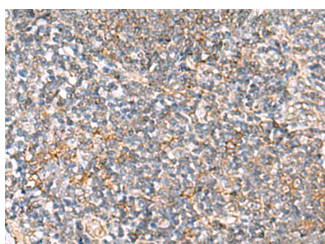
Catalog No.	E-AB-18081	Reactivity	H
Storage	Store at -20°C. Avoid freeze / thaw cycles.	Host	Rabbit
Applications	WB,IHC,ELISA	Isotype	IgG

Note: Centrifuge before opening to ensure complete recovery of vial contents.

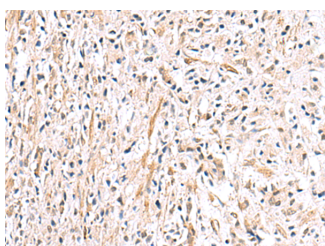
Images



Western blot analysis of 293T cell lysate using HLA-DOB Polyclonal Antibody at dilution of 1:400



Immunohistochemistry of paraffin-embedded Human tonsil tissue using HLA-DOB Polyclonal Antibody at dilution of 1:40(x200)



Immunohistochemistry of paraffin-embedded Human prostate cancer tissue using HLA-DOB Polyclonal Antibody at dilution of 1:40(x200)

Immunogen Information

Immunogen	Synthetic peptide of human HLA-DOB
Gene Accession	NP002111
Swissprot	P13765
Synonyms	HLA-DOB,HLA class II histocompatibility antigen,DO beta chain,MHC class II antigen DOB

Product Information

Calculated MW	31 kDa
Observed MW	Refer to figures
Buffer	PBS with 0.05% NaN ₃ and 40% Glycerol,pH7.4
Purify	Antigen affinity purification
Dilution	WB 1:500-1:2000, IHC 1:30-1:150, ELISA 1:5000-1:10000

Background

HLA-DOB belongs to the HLA class II beta chain paralogues. This class II molecule is a heterodimer consisting of an alpha (DOA) and a beta chain (DOB), both anchored in the membrane. It is located in intracellular vesicles. DO suppresses peptide loading of MHC class II molecules by inhibiting HLA-DM. Class II molecules are expressed in antigen presenting cells (APC: B lymphocytes, dendritic cells, macrophages). The beta chain is approximately 26-28 kDa and its gene contains 6 exons. Exon one encodes the leader peptide, exons 2 and 3 encode the two extracellular domains, exon 4 encodes the transmembrane domain and exon 5 encodes the cytoplasmic tail. HLA-DOB (Major Histocompatibility Complex, Class II, DO Beta) is a Protein Coding gene. Among its related pathways are ICos-ICosL Pathway in T-Helper Cell and CTLA4 Signaling. GO annotations related to this gene include MHC class II protein complex binding and MHC class II receptor activity. An important paralog of this gene is HLA-DRB1.

For Research Use Only

Thank you for your recent purchase.
 If you would like to learn more about antibodies, please visit www.elabscience.com.

Focus on your research
Service for life science

Applications:WB-Western Blot IHC-Immunohistochemistry IF-Immunofluorescence IP-Immunoprecipitation FC-Flow cytometry ChIP-Chromatin Immunoprecipitation Reactivity: H-Human R-Rat M-Mouse Mk-Monkey Dg-Dog Ch-Chicken Hm-Hamster Rb-Rabbit Sh-Sheep Pg-Pig Z-Zebrafish X-Xenopus C-Cow.