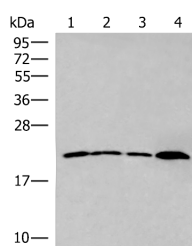


## IFNA5 Polyclonal Antibody

<b>Catalog No.</b>	E-AB-18104	<b>Reactivity</b>	H
<b>Storage</b>	Store at -20°C. Avoid freeze / thaw cycles.	<b>Host</b>	Rabbit
<b>Applications</b>	WB,ELISA	<b>Isotype</b>	IgG

**Note:** Centrifuge before opening to ensure complete recovery of vial contents.

### Images



Western blot analysis of 231 cell  
 Human breast cancer tissue Raji cell  
 Human fetal liver tissue lysates using  
 IFNA5 Polyclonal Antibody at  
 dilution of 1:400

### Immunogen Information

<b>Immunogen</b>	Synthetic peptide of human IFNA5
<b>Gene Accession</b>	NP002160
<b>Swissprot</b>	P01569
<b>Synonyms</b>	IeIF G,IFN alphaG,IFN-alpha-5,IFN-AlphaG,Ifna5,IFNA5,INA5,INFA5,alpha 5,LeIF G

### Product Information

<b>Calculated MW</b>	22 kDa
<b>Observed MW</b>	Refer to figures
<b>Buffer</b>	PBS with 0.05% NaN <sub>3</sub> and 40% Glycerol,pH7.4
<b>Purify</b>	Antigen affinity purification
<b>Dilution</b>	WB 1:500-1:2000, ELISA 1:5000-1:10000

### Background

Produced by macrophages, IFN-alpha have antiviral activities. Interferon stimulates the production of two enzymes: a protein kinase and an oligoadenylate synthetase.

#### For Research Use Only

Thank you for your recent purchase.

If you would like to learn more about antibodies, please visit [www.elabscience.com](http://www.elabscience.com).

**Focus on your research  
 Service for life science**

Applications:WB-Western Blot IHC-Immunohistochemistry IF-Immunofluorescence IP-Immunoprecipitation FC-Flow cytometry ChIP-Chromatin Immunoprecipitation Reactivity: H-Human R-Rat M-Mouse Mk-Monkey Dg-Dog Ch-Chicken Hm-Hamster Rb-Rabbit Sh-Sheep Pg-Pig Z-Zebrafish X-Xenopus C-Cow.