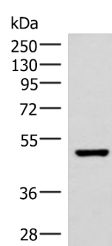


IP6K2 Polyclonal Antibody

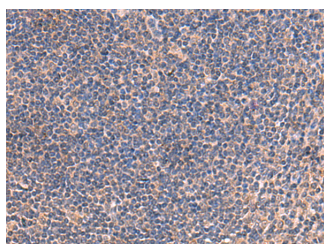
Catalog No.	E-AB-18114	Reactivity	H,M,R
Storage	Store at -20°C. Avoid freeze / thaw cycles.	Host	Rabbit
Applications	WB,IHC,ELISA	Isotype	IgG

Note: Centrifuge before opening to ensure complete recovery of vial contents.

Images



Western blot analysis of Mouse brain tissue lysate using IP6K2 Polyclonal Antibody at dilution of 1:500



Immunohistochemistry of paraffin-embedded Human tonsil tissue using IP6K2 Polyclonal Antibody at dilution of 1:45(x200)

Immunogen Information

Immunogen	Synthetic peptide of human IP6K2
Gene Accession	NP057375
Swissprot	Q9UHH9
Synonyms	IHPK 2,IHPK2,Ip6k2,IP6K2,KIAA0263,PiUS

Product Information

Calculated MW	49 kDa
Observed MW	Refer to figures
Buffer	PBS with 0.05% NaN ₃ and 40% Glycerol,pH7.4
Purify	Antigen affinity purification
Dilution	WB 1:500-1:2000, IHC 1:30-1:150, ELISA 1:5000-1:10000

Background

This gene encodes a protein that belongs to the inositol phosphokinase (IPK) family. This protein is likely responsible for the conversion of inositol hexakisphosphate (InsP₆) to diphosphoinositol pentakisphosphate (InsP₇/PP-InsP₅). It may also convert 1,3,4,5,6-pentakisphosphate (InsP₅) to PP-InsP₄ and affect the growth suppressive and apoptotic activities of interferon-beta in some ovarian cancers. Alternative splicing results in multiple transcript variants encoding different isoforms.

For Research Use Only

Thank you for your recent purchase.
 If you would like to learn more about antibodies, please visit www.elabscience.com.

**Focus on your research
 Service for life science**

Applications:WB-Western Blot IHC-Immunohistochemistry IF-Immunofluorescence IP-Immunoprecipitation FC-Flow cytometry ChIP-Chromatin Immunoprecipitation Reactivity: H-Human R-Rat M-Mouse Mk-Monkey Dg-Dog Ch-Chicken Hm-Hamster Rb-Rabbit Sh-Sheep Pg-Pig Z-Zebrafish X-Xenopus C-Cow.