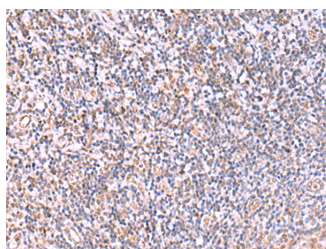


ITPKC Polyclonal Antibody

Catalog No.	E-AB-18123	Reactivity	H
Storage	Store at -20°C. Avoid freeze / thaw cycles.	Host	Rabbit
Applications	IHC,ELISA	Isotype	IgG

Note: Centrifuge before opening to ensure complete recovery of vial contents.

Images



Immunohistochemistry of paraffin-embedded Human tonsil tissue using ITPKC Polyclonal Antibody at dilution of 1:40(×200)

Immunogen Information

Immunogen	Synthetic peptide of human ITPKC
Gene Accession	NP079470
Swissprot	Q96DU7
Synonyms	InsP 3 kinase C,InsP 3-kinase C,IP3 3-kinase C,IP3 3KC,IP3K C,IP3KC,IP3KC,Itpkc

Product Information

Buffer	PBS with 0.05% NaN ₃ and 40% Glycerol,pH7.4
Purify	Antigen affinity purification
Dilution	IHC 1:30-1:150, ELISA 1:5000-1:10000

Background

This gene encodes a member of the inositol 1,4,5-trisphosphate [Ins(1,4,5)P(3)] 3-kinase family of enzymes that catalyze the phosphorylation of inositol 1,4,5-trisphosphate to 1,3,4,5-tetrakisphosphate. The encoded protein is localized to the nucleus and cytoplasm and has both nuclear import and nuclear export activity. Single nucleotide polymorphisms in this gene are associated with Kawasaki disease. ITPKC (Inositol-Trisphosphate 3-Kinase C) is a Protein Coding gene. Diseases associated with ITPKC include Kawasaki Disease and Lymph Node Disease. Among its related pathways are Inositol phosphate metabolism (KEGG) and Calcium signaling pathway. GO annotations related to this gene include calmodulin binding and inositol-1,4,5-trisphosphate 3-kinase activity. An important paralog of this gene is ITPKB.

For Research Use Only

Thank you for your recent purchase.
 If you would like to learn more about antibodies, please visit www.elabscience.com.

**Focus on your research
 Service for life science**

Applications:WB-Western Blot IHC-Immunohistochemistry IF-Immunofluorescence IP-Immunoprecipitation FC-Flow cytometry ChIP-Chromatin Immunoprecipitation Reactivity: H-Human R-Rat M-Mouse Mk-Monkey Dg-Dog Ch-Chicken Hm-Hamster Rb-Rabbit Sh-Sheep Pg-Pig Z-Zebrafish X-Xenopus C-Cow.